

TO PROTECT YOUR HEALTH

# SMART CAPS



A.I.T. France's head office is located at Houilles near Paris. It occupies more than 1000 m<sup>2</sup> of workshop and offices, production and distribution facilities.



Order may be placed by phone, fax, email. When placing your order, please, have the following informations available :

- ▶ Name.
- ▶ Company name, billing and shipping addresses.
- ▶ Purchase order number.
- ▶ Catalogue number and product description.
- ▶ Size, quantity and unit of measure.

Place an order with our customer service staff in English or French between 9:00 am and 5:30 pm, Monday through Friday.

- ▶ By Phone : +33 (0) 1 34 93 10 80

Orders may be faxed to the following number 24hrs a day, 7 days a week.

- ▶ By Fax : +33 (0) 1 34 93 45 67
- ▶ By Email : [aitfrance@aitfrance.fr](mailto:aitfrance@aitfrance.fr)
- ▶ By Mail : A.I.T. France, 117 rue de Stalingrad, 78800 Houilles - France

For credit card payment, please contact us.

*Since 1991, A.I.T. France has been an acknowledge chromatography specialist. Our legal and financial independence and our long experience have made us develop our wide range of smart caps.*

*The Smart Caps' range for more than 10 years, thus ranking us as one of the European leaders in this field, thanks to a workshop of 1000 m<sup>2</sup>.*

*Our team is inspired by the will to offer to its clients a flexible and an efficient service with competitive priced products.*

*A.I.T. France is very attentive to your needs.*

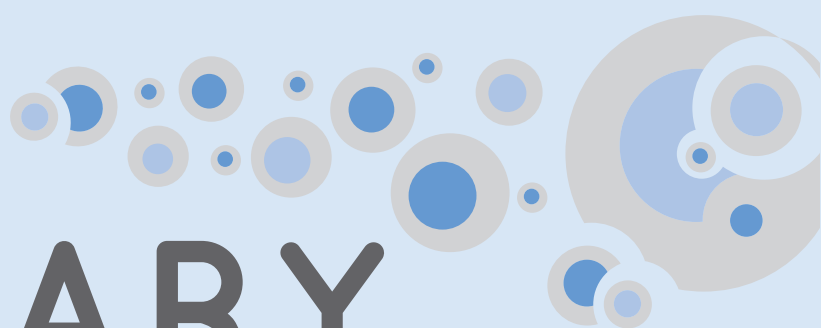
*Being an authentic manufacturer, we are ready to help you with particular requests and equipment installation in your laboratories, even for one single item without any further cost.*

*A.I.T. France will always strive to earn your confidence.*

*Should you want to distribute our products ? Please, contact us, OEM manufacturing are welcome.*

*Pascal AZNAR*

*President of A.I.T. France*



# SUMMARY

## HEALTHY AND WASTE CAPS, HOW DOES IT WORK ?

## SMART HEALTHY CAPS

### ANALYTICAL SYSTEM

Guide for installing a SHC	8
Smart Healthy Caps GL45	9
Starter Kit Smart Healthy Caps	10-11
GL45 thread with stopcock	12
Ground neck / Distri Smart	13
Smart Healthy Caps with septum	14

### PREPARATIVE HPLC SYSTEM

GL45 thread	15
DIN 51/S55 & S60 thread	16
Safety funnel for preparative	17

### ADAPTERS

Multi-Ways adapters	18
Operating principle	19
Classic adapters	20

### BOTTLE

DURAN® glass bottle GL45	21
--------------------------	----

### ACCESSORIES

Air check valve	22
Universal capillary connectors	23
Fittings and Ferrules	24
Tubing	25

## SMART WASTE CAPS

### ACTIVATED CHARCOAL CARTRIDGE

Cartridge for Cans	26
Cartridge for Metallic barrel	27
Adapters	28
Adapters for JUSTRITE® can	29

### SMART WASTE CAPS THREADS

Guide for installing a SWC	30
DIN 51 / S55	31
GL45	32
Burkle S50	33
DIN 60 / S61	34
DIN 90 / S90	35
NALGENE® bottle	36
Level indicator	37
Special demands	38

### ADAPTERS

For cans fitted	39-40
-----------------	-------

### ACCESSORIES

Universal capillary connectors	41
Container thread sizes	42
Starter Kit Smart Waste Caps	43
Threaded barbed fittings	44-45
Conectors and adapters	46
Tubing and blind plugs	47
Quick connect fittings	48-49

## SAFETY FUNNELS

Funnel with Hinged lid	52-53
Funnel with stopcock	54
Funnel with ball valve	55-57
Electro conductive funnel	58

## CANS

Cans	60
Retention tray	61
Space-saving cans	61

## INDEX

62-66
-------

# HEALTHY AND WASTE CAPS, A ONE WAY AIR CHECK VALVE TECHNOLOGY

**DANGER !**

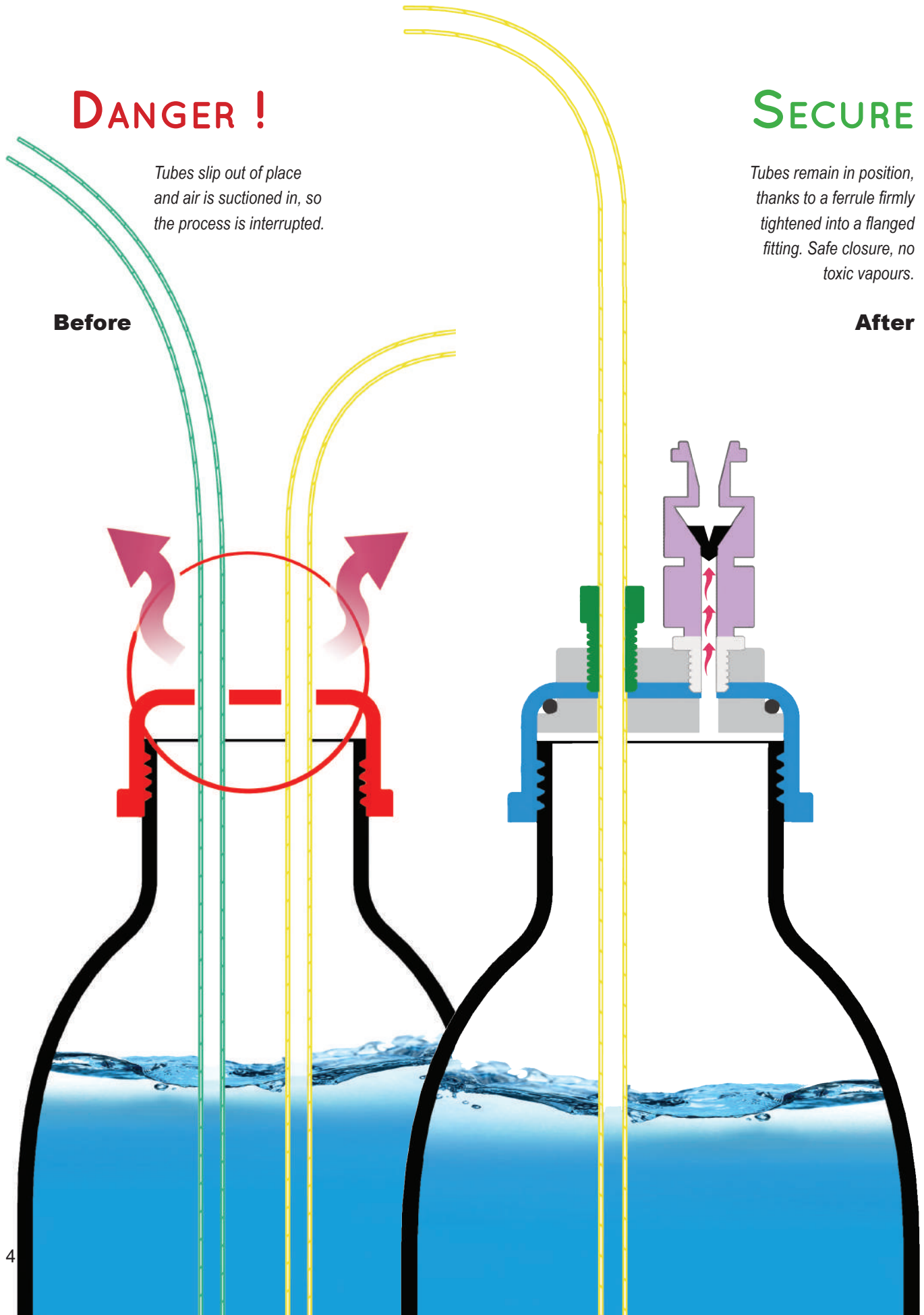
*Tubes slip out of place  
and air is suctioned in, so  
the process is interrupted.*

**Before**

**SECURE**

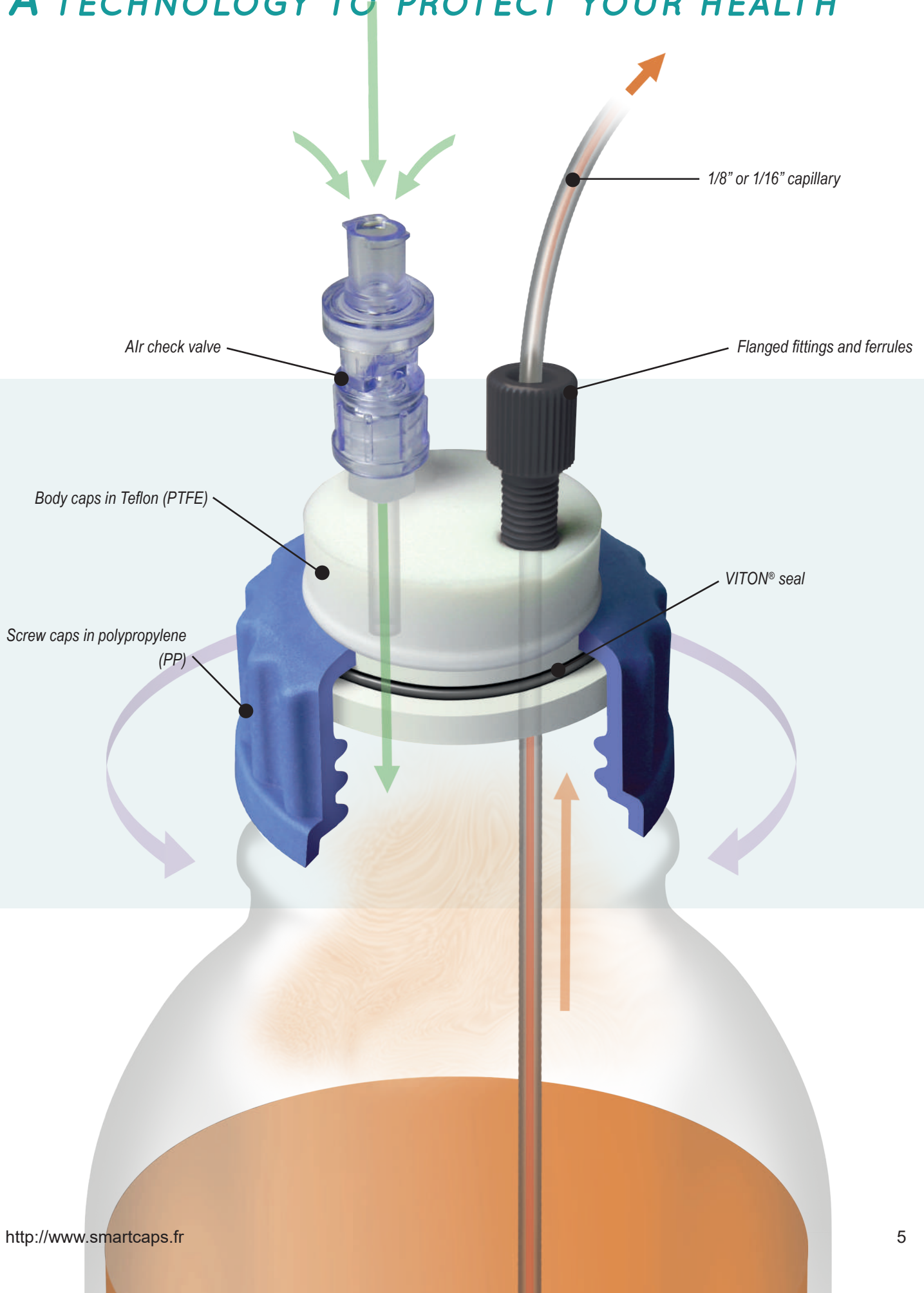
*Tubes remain in position,  
thanks to a ferrule firmly  
tightened into a flanged  
fitting. Safe closure, no  
toxic vapours.*

**After**



# HOW DOES IT WORK ?

*A TECHNOLOGY TO PROTECT YOUR HEALTH*



# HEALTHY AND WASTE CAPS,

## A ONE WAY AIR CHECK VALVE TECHNOLOGY

Smart Healthy Caps are in response to modern laboratory safety regulations.

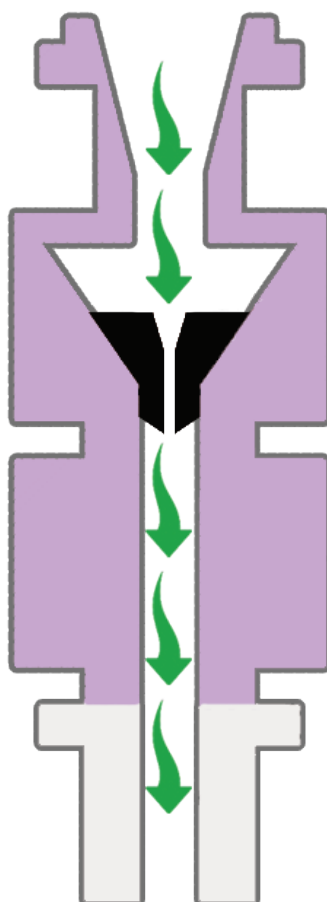
They are made of inert materials resistant to chemicals.

The use of a one-way air check valve allows for low cost safe and secure solvent extraction in your laboratory.

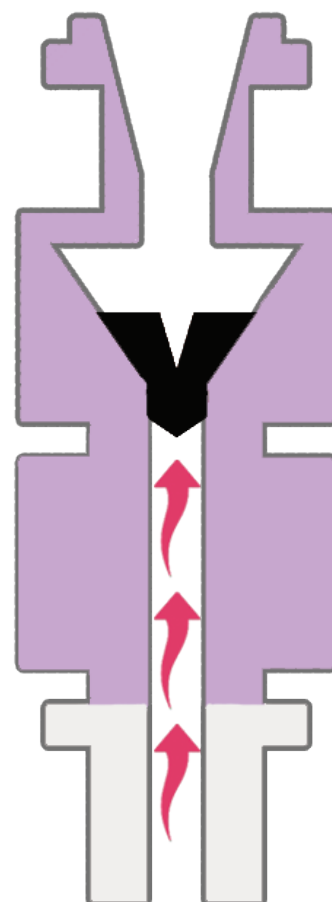
- ▶ No solvent evaporation. ✓
- ▶ Keep your concentration accurate for several days. ✓
- ▶ No mobile phase external contamination. ✓

### 360° ROTATION!

The rotation of the central part of the caps allows a good ease of installation, and also avoids any entanglement of tubes.



*The membrane allows air to enter for pressure equalization.*



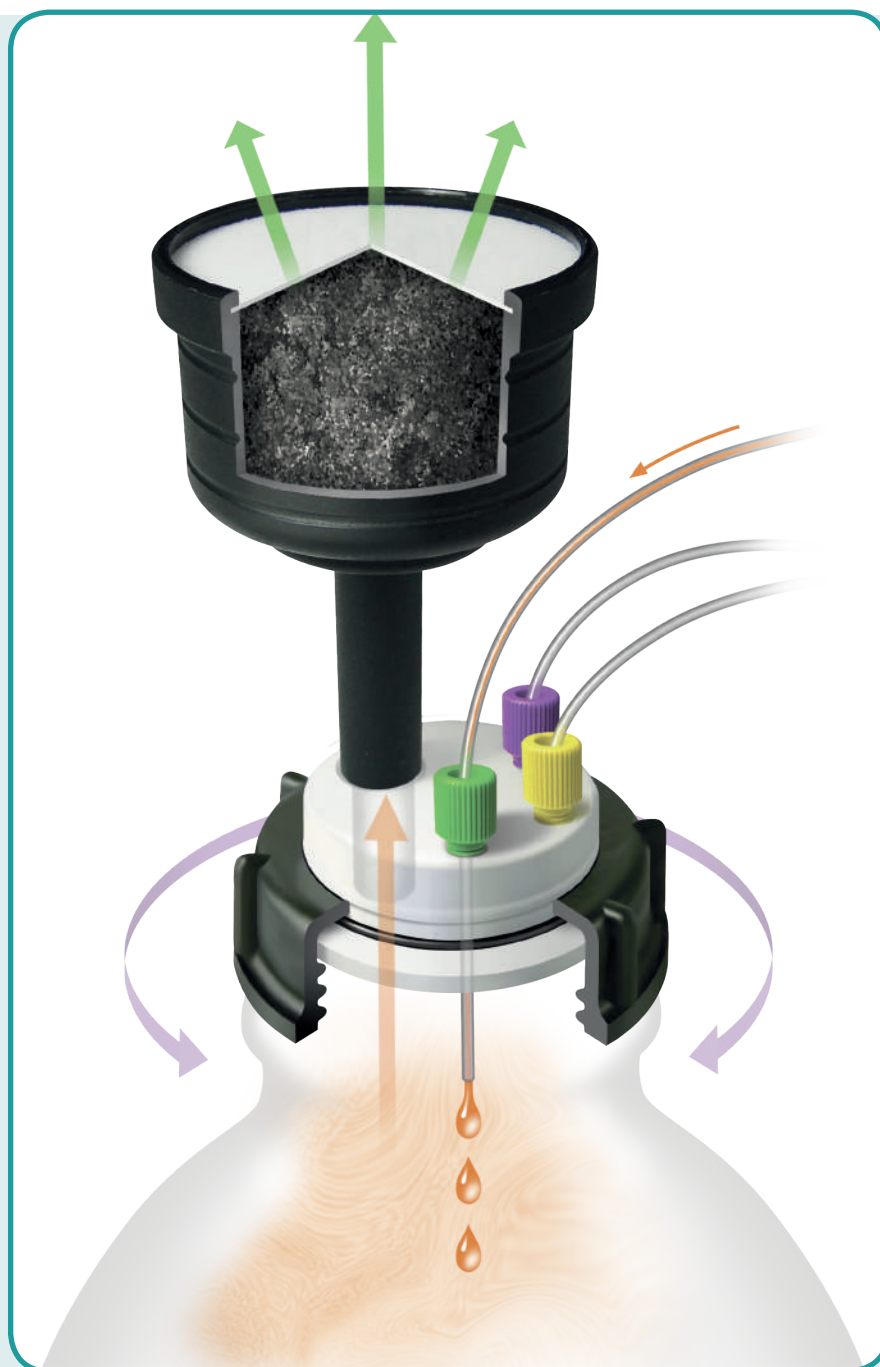
*The membrane is a barrier against eluent vapours and gas leaks.*

# HOW DOES IT WORK ?

## A TECHNOLOGY TO PROTECT YOUR HEALTH

A Smart Waste Caps is formed by an airtight cap, drilled by a variable number of holes to host effluents tubes outgoing of the HPLC system.

The main piece is a cartridge filled with activated charcoal attached to the cap. This filter allows the absorption of 98% of the solvent's vapours released by the solvent's can.

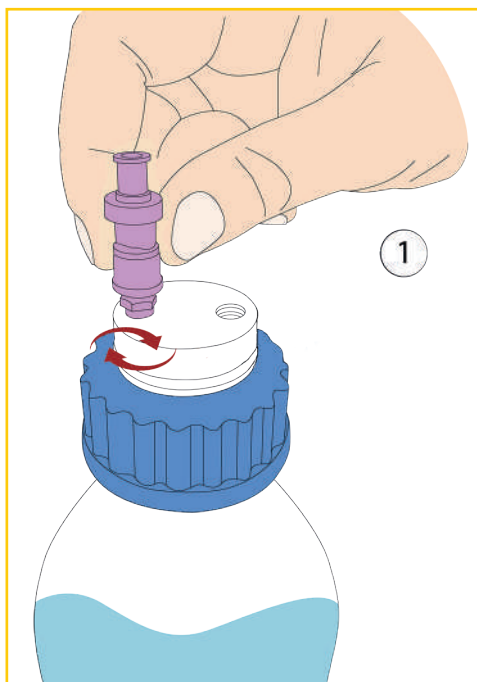


AIT France offers a diversified range of activated charcoal cartridge for the emission of eluent or solvent vapors; by special charcoal impregnation, the cartridges become an excellent barrier against concentrated acids or bases.

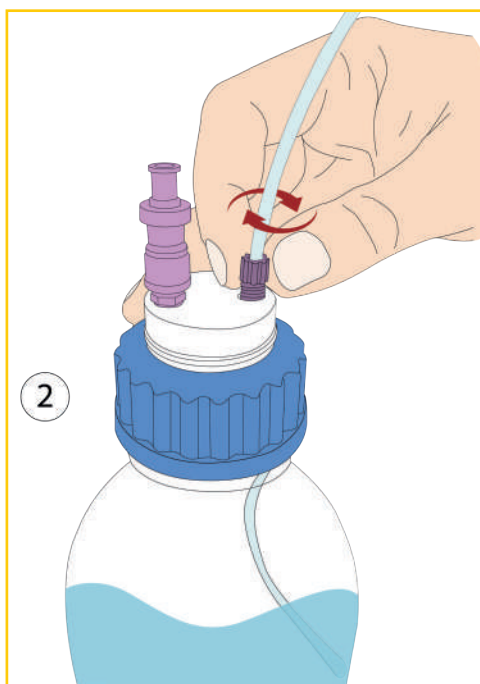
*See page 26.*

# SMART HEALTHY CAPS

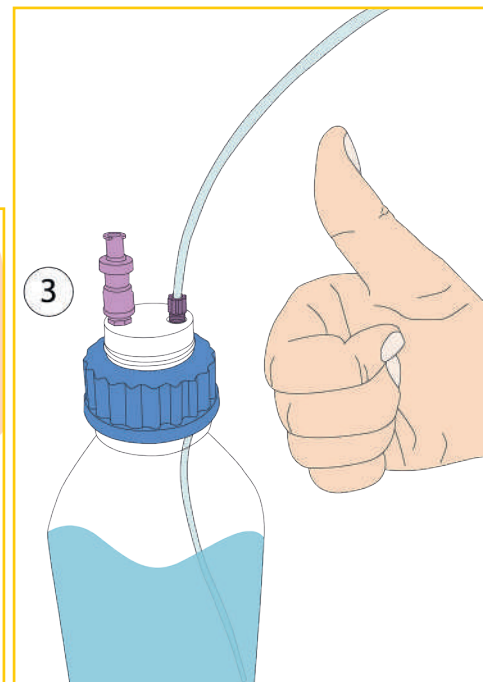
## GUIDE FOR INSTALLING A SMART HEALTHY CAPS



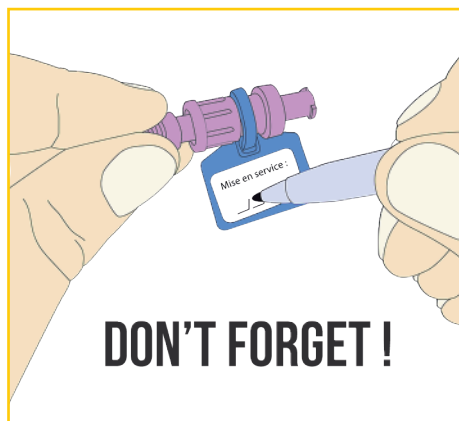
- Our Smart Healthy Caps are delivered with their pre-installed air check valves. However, if you need a valve that is resistant to polar solvent or amine derivatives vapors, simply unscrew the valve in place and then screw the new valve into its proper thread in the cap.



- Screw the universal capillary connector into its proper thread on your Smart Healthy Cap. (See our "Installing a universal capillary connector" guide on page 21 for more details)



- Installation completed!



...And do not forget to indicate the date of commissioning of your air check valve in order to be able to anticipate its renewal!



# SMART HEALTHY CAPS

## ANALYTICAL SYSTEM

### GL45 THREAD TYPE WITH AIR CHECK VALVE



Smart Healthy Caps for GL45 or DURAN® types are the most widespread in laboratories. Smart Healthy Caps are delivered with their universal capillary connector (external diameter 1/8" to 1/16").



DESCRIPTION	FERRULE *	REFERENCE
Smart healthy caps GL45, 1 outlet and 1 air check valve	1/8"	SHC-1
Smart healthy caps GL45, 2 outlets and 1 air check valve	1/8"	SHC-2
Smart healthy caps GL45, 3 outlets and 1 air check valve	1/8"	SHC-3
Smart healthy caps GL45, 4 outlets and 1 air check valve	1/8"	SHC-4
Smart healthy caps GL45, 5 outlets and 1 air check valve	1/8"	SHC-5



\* For another diameter, precise it when you order it.

**NEW** : Choose the color of your caps, for exemple choose it according to the solvent in your bottle.



Add at the end of the reference the letter corresponding to the color you want. Caps are delivered in blue without any indications from you.  
Exemple for a green cap : **SHC-1-G**

\* Color Code

# SMART HEALTHY CAPS

## STARTER KIT FOR SMART HEALTHY CAPS

### WITHOUT BOTTLES

These kits have everything you need to discover our products with attractive prices.



DESCRIPTION	FERRULE *	REFERENCE
4x Smart Healthy Caps GL45, 1 outlet & 1 air check valve	1/8"	KIT-SHC-1
4x Smart Healthy Caps GL45, 2 outlets & 1 air check valve & 4 plugs*	1/8"	KIT-SHC-2
4x Smart Healthy Caps GL45, 3 outlets & 1 air check valve & 8 plugs*	1/8"	KIT-SHC-3



Plugs are useful if you need to block an outlet



# SMART HEALTHY CAPS

## STARTER KIT FOR SMART HEALTHY CAPS

WITH BOTTLES



DESCRIPTION	FERRULE *	REFERENCE
4x Clear glass bottles, 4x Smart Healthy Caps GL45, 2 outlets & 1 air check valve & 4 plugs*	1/8"	KITB-4SHC-2
5x Clear glass bottles, 5x Smart Healthy Caps GL45, 2 outlets & 1 air check valve & 5 plugs*	1/8"	KITB-5SHC-2



# SMART HEALTHY CAPS

## GL45 THREAD WITH STOPCOCK

GL45 Smart Healthy Caps with a stopcock offer more flexibility, without air bubbles inside the tubing.

Smart Healthy Caps are delivered with their fittings 1/8" (external diameter 3,2 mm).



SHC-V1



SHC-V4

DESCRIPTION	FERRULE *	REFERENCE
Smart healthy caps GL45, 1 outlet with shut-off and 1 air check valve	1/8"	SHC-V1
Smart healthy caps GL45, 2 outlets with shut-off and 1 air check valve	1/8"	SHC-V2
Smart healthy caps GL45, 3 outlets with shut-off and 1 air check valve	1/8"	SHC-V3
Smart healthy caps GL45, 4 outlets with shut-off and 1 air check valve	1/8"	SHC-V4

\*For another diameter, specify it when ordering.

## GROUND NECK WITH AIR CHECK VALVE

Smart Healthy Caps with ground neck 29/32 are made for ground-necked flasks. Smart Healthy Caps are delivered with their universal capillary connector (external diameter 1/8" to 1/16").



SHC-1-EM



SHC-2-EM



AD-45-EM\*\*

\*\*SHC-2 sold separately.

# SMART HEALTHY CAPS

## GROUND NECK WITH AIR CHECK VALVE

DESCRIPTION	FERRULE *	REFERENCE
Smart healthy caps, ground neck (29/32 mm)	1 outlet (1/8"), 1 air check valve	SHC-1-EM
Smart healthy caps, ground neck (29/32 mm)	2 outlets (1/8"), 1 air check valve	SHC-2-EM
Smart healthy caps, ground neck (29/32 mm)	3 outlets (1/8"), 1 air check valve	SHC-3-EM
Smart healthy caps, ground neck (29/32 mm)	4 outlets (1/8"), 1 air check valve	SHC-4-EM

\* For another diameter, precise it when you order it.



## DISTRISMART SAFE WITH A SMART HEALTHY CAP

DESCRIPTION	REFERENCE
Distri Smart Safe Adapter of 1 outlet (1/8" or 1/16") + 1 air check valve	SHC-1PV
Distri Smart Safe Adapter of 2 outlets (1/8" or 1/16") + 1 air check valve	SHC-2PV
Distri Smart Safe Adapter of 3 outlets (1/8" or 1/16") + 1 air check valve	SHC-3PV
Distri Smart Safe Adapter of 4 outlets (1/8" or 1/16") + 1 air check valve	SHC-4PV
Pipette 1 to 10 mL *	DIS 10
Pipette 2,5 to 25 mL *	DIS 25

A.I.T. is introducing a new variable volume system for eluent distribution which can be directly attached to your HPLC solvent bottle. It provides with the same benefits as the Smart Healthy Caps but with this additional feature. The neck is compatible with the DURAN® GL45 bottles.



\* To obtain the same configuration as the picture above, choose a Distri Smart Safe Adapter and a pipette.

# SMART HEALTHY CAPS

## ANALYTICAL SYSTEM

Smart Healthy Caps Septum offers you the possibility to introduce or withdraw a volume of solvent or reagent of your choice at any time.

### DESCRIPTION

### REFERENCE

Smart Healthy Caps GL45 1 septum*, 1 outlet (1/8" or 1/16") and 1 air check valve	SHC-1-SEPT
Smart Healthy Caps GL45 1 septum*, 2 outlets (1/8" or 1/16") and 1 air check valve	SHC-2-SEPT
Smart Healthy Caps GL45 1 septum*, 3 outlets (1/8" or 1/16") and 1 air check valve	SHC-3-SEPT

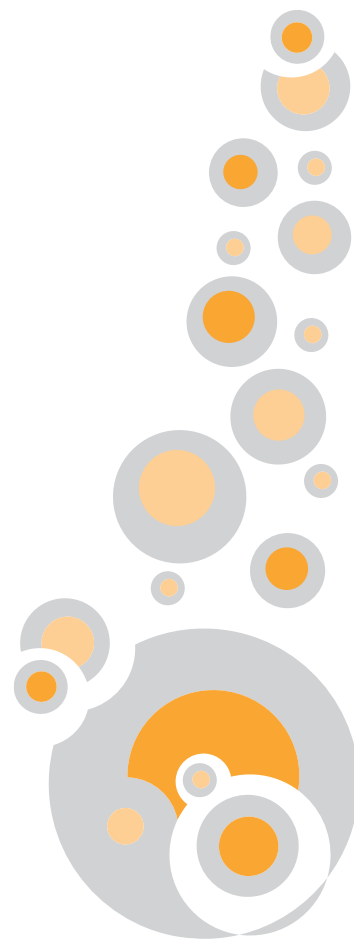
\*The septum is delivered as standard, non-pierced




# SMART HEALTHY CAPS

## PREPARATIVE SYSTEM

SMART HEALTHY CAPS FOR GL45 SCHOTT®  
OR DURAN® TYPE



 Warning : **Change your air check valve once a year.**

DESCRIPTION	REFERENCE
Smart Healthy Caps GL45 for preparative HPLC with 1 outlet (1/4") + 1 air check valve	SHC-P-A
Smart Healthy Caps GL45 for preparative HPLC with 2 outlets (1/4" and 1/8") + 1 air check valve	SHC-P-A-C
Smart Healthy Caps GL45 for preparative HPLC with 1 outlet (3/16") + 1 air check valve	SHC-P-B
Smart Healthy Caps GL45 for preparative HPLC with 2 outlets (3/16") + 1 air check valve	SHC-P-2B



SHC-P-A-C



SHC-P-A



SHC-P-B

**OTHER  
CONFIGURATIONS  
POSSIBLE ON  
REQUEST!**

# SMART HEALTHY CAPS

## PREPARATIVE SYSTEM

### SMART HEALTHY CAPS FOR DIN51/S55 AND DIN60/S60 THREADS

Specially adapted for large volumes of preparative HPLC eluents. The air check valve works with a flow rate from 100ml / min to 500ml / min.

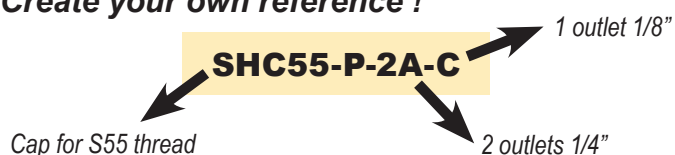


DESCRIPTION *	REFERENCE
Smart Healthy Caps S55 for preparative HPLC with 1 outlet (1/4") + 1 air check valve	SHC55-P-A
Smart Healthy Caps S55 for preparative HPLC with 2 outlets (1/4" et 1/8") + 1 air check valve	SHC55-P-A-C
Smart Healthy Caps S55 for preparative HPLC with 1 outlet (3/16") + 1 air check valve	SHC55-P-B
Smart Healthy Caps S60 for preparative HPLC with 1 outlet (1/4") + 1 air check valve	SHC60-P-A
Smart Healthy Caps S60 for preparative HPLC with 2 outlets (1/4" et 1/8") + 1 air check valve	SHC60-P-A-C
Smart Healthy Caps S60 for preparative HPLC with 1 outlet (3/16") + 1 air check valve	SHC60-P-B



\*also available with any type of thread (Nalgene, DIN90...)

**Create your own reference !**



Outlets : A = 1/4", B = 3/16", C = 1/8"



# SMART HEALTHY CAPS

## PREPARATIVE SYSTEM

### SMART HEALTHY CAPS WITH FUNNEL FOR PREPARATIVE HPLC BOTTLE

This Smart Healthy Caps, equipped with a funnel with hinged lid, allows to pour the eluent into the bottle without having to unscrew the cap. It is equipped with an air check valve.

SHC45-FSP-B



#### DESCRIPTION

#### THREAD

#### REFERENCE

Funnel with hinged lid for solvent reservoir with one outlet of 4 mm (3/16") and one air check valve

GL45

SHC45-FSP-B

S55

SHC55-FSP-B

S60

SHC60-FSP-B

NALGENE® B53

SHCB53-FSP-B

Metallic barrel

SHCBA-FSP-B

Funnel with hinged lid for solvent reservoir with one outlet of 6.4 mm (1/4") and one air check valve

GL45

SHC45-FSP-A

S55

SHC55-FSP-A

S60

SHC60-FSP-A

NALGENE® B53

SHCB53-FSP-A

Metallic barrel

SHCBA-FSP-A

Funnel with hinged lid for solvent reservoir with one outlet of 3.2 mm (1/8") and one air check valve

GL45

SHC45-FSP-C

S55

SHC55-FSP-C

S60

SHC60-FSP-C

NALGENE® B53

SHCB53-FSP-C

Metallic barrel

SHCBA-FSP-C

**Create your own reference !**

**SHC55 - FSP - B**

Thread type

Tube outer diameter

Outlets : A = 1/4", B = 3/16", C = 1/8"

# SMART HEALTHY CAPS

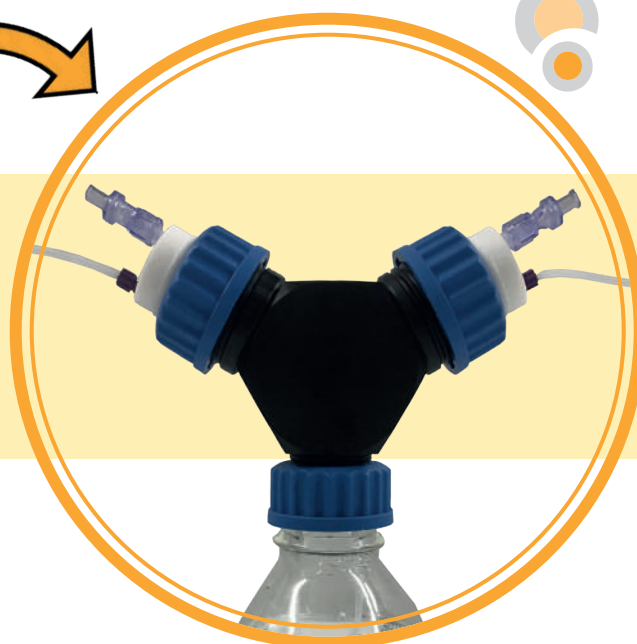
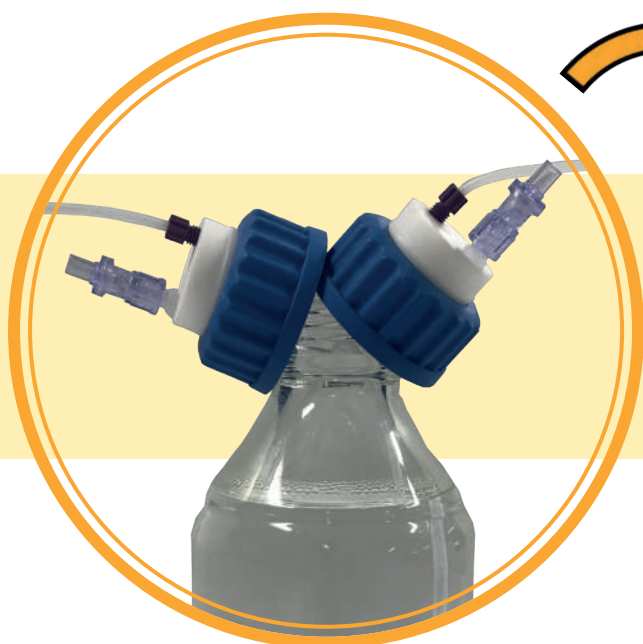
## ADAPTERS WITH MULTIPLE WAYS

MULTI-WAYS ADAPTER ALLOWING TO CONNECT A BOTTLE WITH A GL45 THREAD TO 2 & 4 GL45 SAFETY CAPS\*

The multi-ways adapter allows several channels to be purged in the eluent bottle while remaining airtight.

BEFORE...

AFTER!



AD-2T-GL45  
for 2 SHC



AD-4T-GL45  
for 4 SHC

\* Also available for other threads of bottles and cans

# SMART HEALTHY CAPS

## ADAPTERS

### OPERATING PRINCIPLE

We can supply you with all types of adapters not described in the catalog.  
Do not hesitate to ask us!



32 mm

GL32 bottle  
Measures 32 mm for  
external threads.

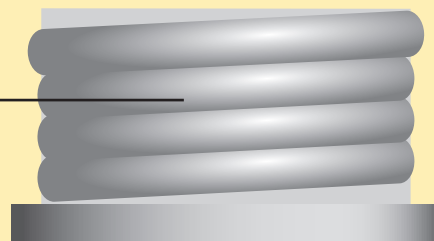
Smart Healthy Caps GL45



38 mm

GL38 bottle  
Measures 38 mm for  
external threads.

Adapter



45 mm

GL45 bottle  
Measures 45 mm for  
external threads.

Thread



# SMART HEALTHY CAPS

## CLASSIC ADAPTERS

To connect a GL45 cap on a bottle with a different thread.

THREAD*	To**	MATERIAL	REFERENCE
GL40	GL45	PTFE	AD-40-45-T
GL40	GL45	PP	AD-40-45-P
GL32	GL45	PTFE	AD-32-45-T
GL32	GL45	PP	AD-32-45-P
GL38	GL45	PTFE	AD-38-45-T
GL38	GL45	PP	AD-38-45-P



AD-40-38-P



AD-38-45-T



AD-40-45-P

PTFE : Teflon.  
PP : Polypropylene.  
\* Bottle thread  
\*\* Cap's Thread : Smart Healthy Caps.

## NOTES

.....

.....

.....

.....

.....

.....

# SMART HEALTHY CAPS

## BOTTLE

### DURAN® GL45 BOTTLE

A complete range of solvent bottles perfectly adapted for GL45 Smart Healthy Caps.

GL250-C



GL2000-C



VOLUME (mL)	GLASS	REFERENCE
250	Clear	GL250-C
250	Amber	GL250-A
500	Clear	GL500-C
500	Amber	GL500-A
1000	Clear	GL1000-C
1000	Amber	GL1000-A
2000	Clear	GL2000-C
2000	Amber	GL2000-A
5000	Clear	GL5000-C
5000	Amber	GL5000-A

GL1000-C



GL500-C



# SMART HEALTHY CAPS

## ACCESSORIES : AIR CHECK VALVE

All our Smart Healthy Caps are equipped with a standard air check valve.

For optimal use, it is recommended to **change the air check valve once a year!**

## STANDARD AIR CHECK VALVE

For organo-aqueous eluents.

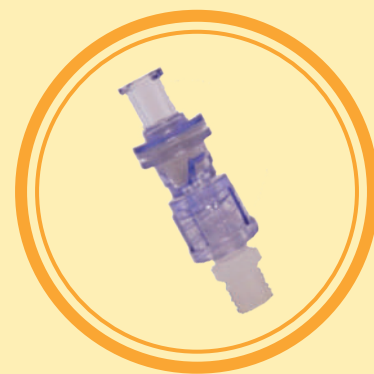
Weak and strong acidic eluents.

Non-amino basic eluents.

Polar & apolar eluents.

Maximum recommended flow: 100mL / min

REFERENCE	QTY
SHC-SV	1
SHC-SV10	10
SHC-SV50	50



SHC-SV-PREP

## AIR CHECK VALVE FOR PREPARATIVE HPLC

Same characteristics as the standard air check valve but for HPLC systems with very high flow rates (>100mL / min and <500mL / min).

## AIR CHECK VALVE FOR BASIC AMINE SOLVENTS

Same characteristics as the standard air check valve, but essential for the use of eluents containing bases with high pKa (triethylamine) or high concentrations (ammonia).

REFERENCE	QTY
SHC-SV-AB	1
SHC-SV-AB10	10
SHC-SV-AB50	50

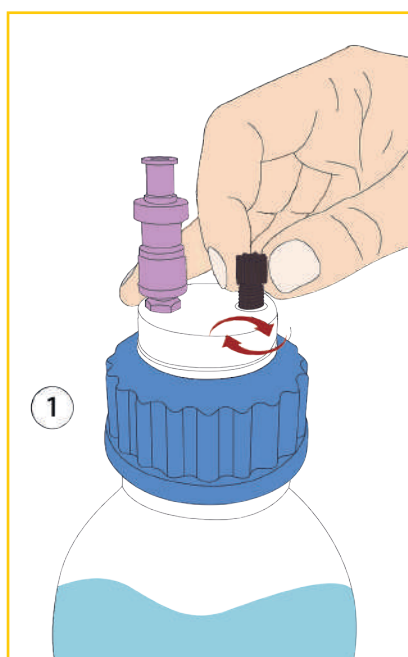


# SMART HEALTHY CAPS

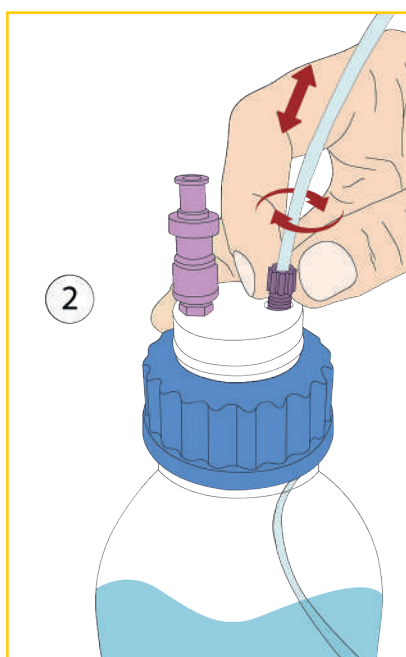
## ACCESSORIES : THE UNIVERSAL CAPILLARY CONNECTOR

- Facilitates the connection of capillary tubes from 1 mm to 3,2 mm (1/8")
- The universal capillary connector replaces the entire fitting + ferrule 1/8" and 1/16"
- The universal capillary connector ensures excellent sealing

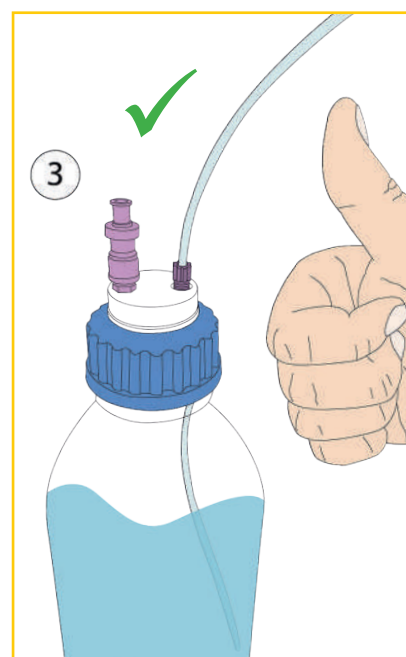
### GUIDE FOR UNIVERSAL CAPILLARY CONNECTOR CHANGE:



- Insert the universal capillary connector into its proper thread, without fully tightening it.



- Insert your tube into the universal capillary connector, adjust its length and then screw the fitting until the tube stops moving.



- Installation completed!

DESCRIPTION	FOR TUBE (OD)	COLOR	QTY/PK	REFERENCE
Universal capillary connector, Type I Black	for 1/16" to 1mm	Black	5	CC-ONE-1BL
Universal capillary connector, Type I Purple	for 1/16" to 1mm	Purple	5	CC-ONE-1V
Universal capillary connector, Type II Black	for 1/8" to 1/16"	Black	5	CC-ONE-2BL
Universal capillary connector, Type II Purple	for 1/8" to 1/16"	Purple	5	CC-ONE-2V

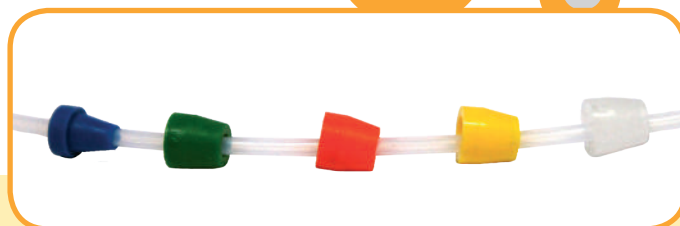


# SMART HEALTHY CAPS






## ACCESSORIES

### NUTS AND FERRULES FOR 1/8" AND 1/16"

Ferrules 1/8", ref : F18. Flangefree fitting for ferrule 1/8" OD.  
 Ferrules 1/16", ref : F16. Flangefree fitting for ferrule 1/16" OD.



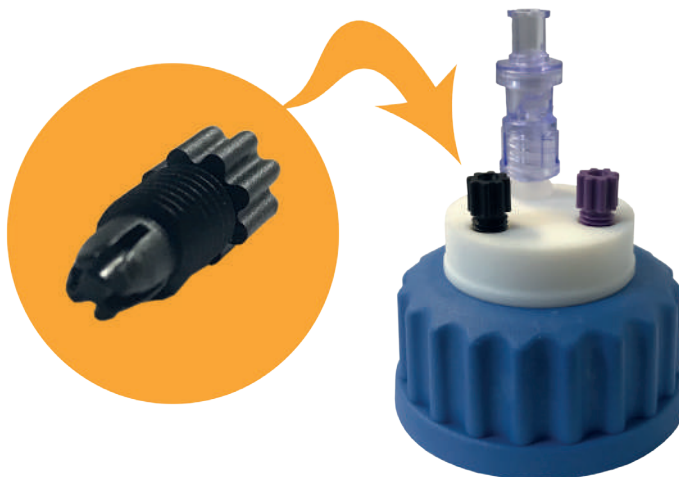
\* Please join to the reference the color you want.  
 For example : R18-N for black nuts.

Red : R   
 Blue: B   
 Green: G   
 Purple: P   
 Black: N 

TUBE (OD)		REFERENCE NUTS	REFERENCE FERRULES
INCH	MILLIMETER	PER 10 UNITS *	PER 10 UNITS
1/4"	6,3 mm	R14	F14
3/16"	4 mm	R316	F316
1/8"	3,2 mm	R18	F18
	2,5 mm	R18	F25
1/16"	1,6 mm	R16	F16
	1,0 mm	R16	F10

### BLIND PLUG, ALLOWING YOU TO CLOSE AN UNUSED OUTLET OF YOUR SMART HEALTHY CAPS

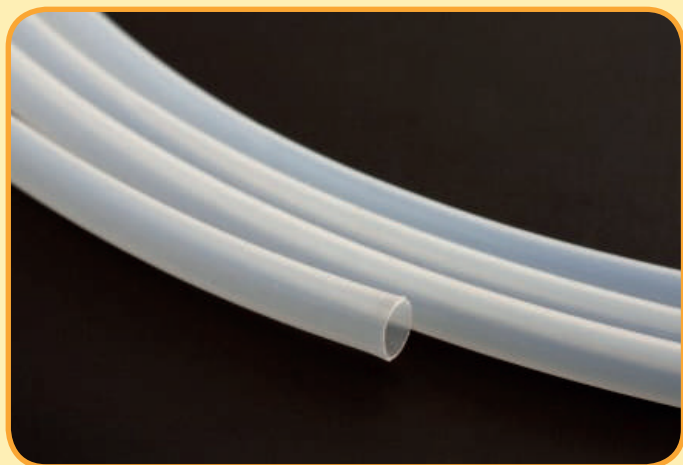
FOR	REFERENCE	QUANTITY
Vis 1/8"	VP-F18	Par 10





# SMART HEALTHY CAPS

## PTFE TUBES



OD	ID	REFERENCE *	QUANTITY
1/4"	6,3 mm	TP14	1 meter
3/16"	3 mm	TP316	1 meter
1/8"	1,6 mm	TP18	1 meter
1/16"	1,0 mm	TP16	1 meter

## TYGON™ TUBES



OD	ID	REFERENCE *	QUANTITY
9,5 mm	6,4 mm	TYG-64	1 meter
19,1 mm	12,7 mm	TYG-127	1 meter

## NOTES

.....

.....

.....

.....

.....

.....

.....

.....

# SMART WASTE CAPS

## ACTIVATED CHARCOAL CARTRIDGE

ACTIVATED CHARCOAL CARTRIDGE FOR CANS FROM 2,5 TO 20 LITERS



Adapter to connect activated charcoal cartridge to Vaplock™ manifold



Each cartridge is delivered with a label on which you can write the commissioning date and the replacement date of your cartridge.  
The replacement date depends on the quantity of activated charcoal in the cartridge.

\* For each charcoal filter cartridge order, a time monitoring is delivered if you ask for. Just add the letter T at the end of the reference.

DESCRIPTION	CHARCOAL QUANTITY	DURATION	REFERENCE
Activated charcoal cartridge	25 gr	3 months	FC-25
Activated charcoal cartridge	50 gr	6 months	FC-50
Activated charcoal cartridge with a lid	50 gr	6 months	FC-50-C
Activated charcoal cartridge	100 gr	12 months	FC-100
Activated charcoal cartridge loaded with H <sub>2</sub> SO <sub>4</sub> for volatile base in waste eluants.	100 gr	6 to 12 months	FC-100-H2SO4
Activated charcoal cartridge loaded with KOH for volatile acid in waste eluants.	100 gr	6 to 12 months	FC-100-KOH

# SMART WASTE CAPS

## PACK OF 3 ACTIVATED CHARCOAL CARTRIDGE

DESCRIPTION	CHARCOAL QUANTITY	DURATION	REFERENCE
3x Activated charcoal cartridge	50 gr	6 months	FC-50-3
3x Activated charcoal cartridge	100 gr	12 months	FC-100-3
2x Activated charcoal cartridge loaded with H <sub>2</sub> SO <sub>4</sub>	50 gr	6 months	FC-100-H2SO4-2
2x Activated charcoal cartridge loaded with KOH	100 gr	12 months	FC-100-KOH-2

## CARTRIDGE OF ACTIVATED CHARCOAL FOR METALLIC BARREL FROM 50 TO 200 LITERS

For a metallic barrel, a higher quantity of activated charcoal is needed. We propose you 2 models of filter depending on the volume of your metallic barrel.

DESCRIPTION	FOR A METALLIC BARREL OF	THREAD**	REFERENCE
Activated charcoal cartridge of 250 gr	50 L	2" - 3/4"	FC-250
Activated charcoal cartridge of 500 gr	200 L	2" - 3/4"	FC-500

\* 3/4" for the small bung and 2" for the large bung.

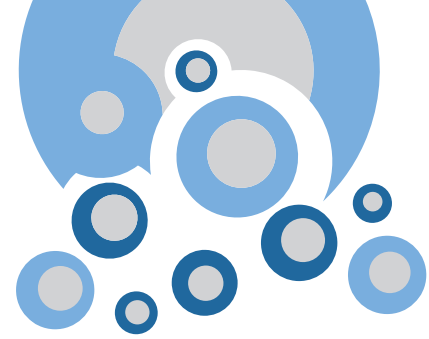
\*\* For other types of thread on your barrel, please contact us directly.

A wide range of safety funnels is proposed to you page 46 to 55.



# SMART WASTE CAPS

## ACTIVATED CHARCOAL CARTRIDGE



### ADAPTERS FOR ACTIVATED CHARCOAL CARTRIDGE

If you have a problem to place the can with the cartridge under the bench, we offer you 4 types of adapters which can be combined to solve all of you problems. You can see below few types of combinations. Other combinations are possible.

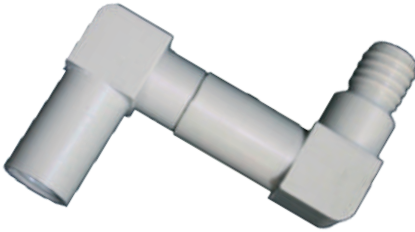
FC-D



FC-D-90



FC-180



FC-90



#### DESCRIPTION

#### REFERENCE

Straight extension long piece

FC-D

90° Adapter for angled connection

FC-90

Double angled connection adapter (combination of 2 FC-90)

FC-180

Straight extension long piece with 90° adapter for angled connection

FC-D-90

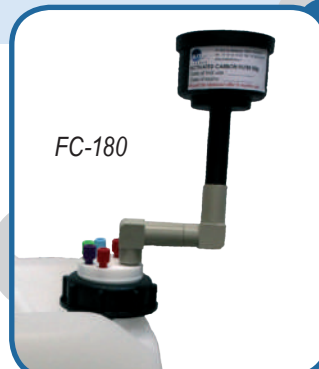
FC-90



FC-D-90



FC-180



FC-D



# SMART WASTE CAPS

## SPECIAL ADAPTERS\* FOR JUSTRITE® CAN

\* Allows to accept activated charcoal cartridge on JUSTRITE® can.



FC-AD-CPC



AD-CPC



FC-AD-JUST



AD-D-JUST

### DESCRIPTION

### REFERENCE

Adapter with 3 entries and a threaded barbed fitting for a direct CPC connection

AD-CPC

Adapter with 3 entries and a threaded barbed fitting for a connection on JUSTRITE® can

AD-D-JUST

Adapter with an activated charcoal cartridge location for JUSTRITE® container

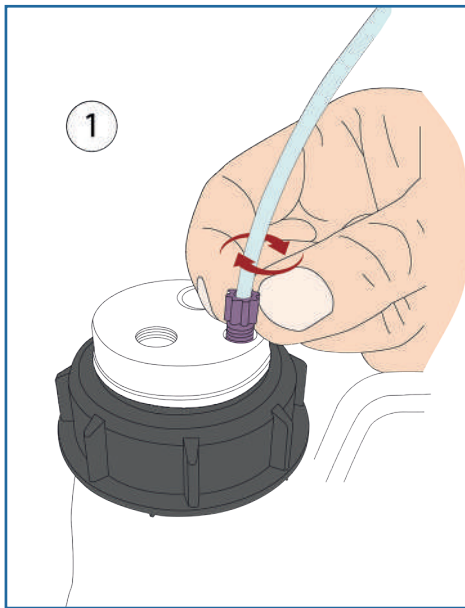
FC-AD-JUST

Adapter with an activated charcoal cartridge location for CPC connection

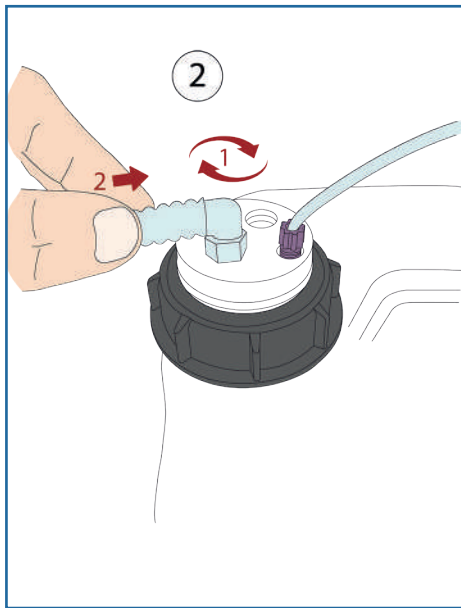
FC-AD-CPC

# SMART WASTE CAPS

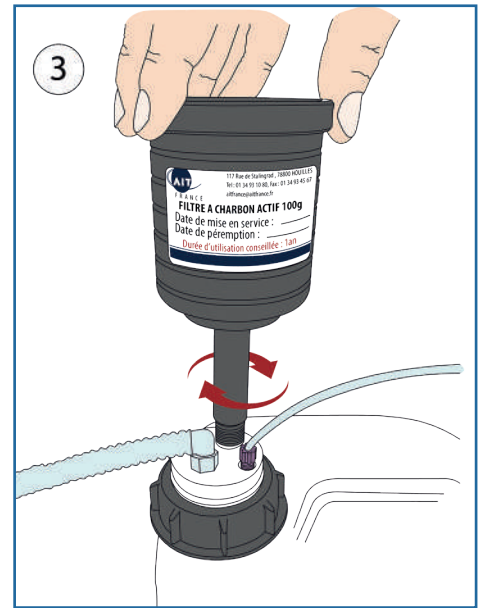
## GUIDE FOR INSTALLING A SMART WASTE CAPS



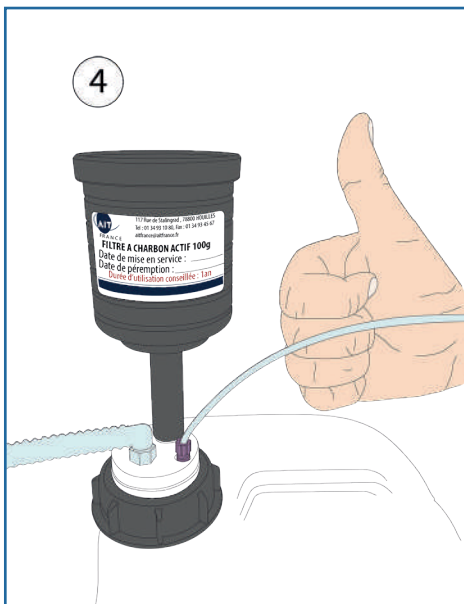
- Insert the universal capillary connector into its proper thread



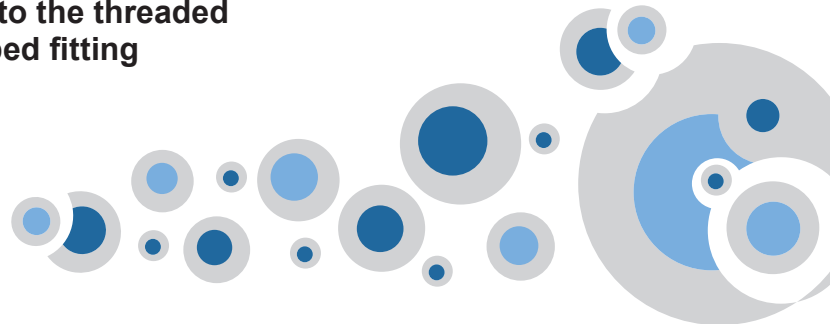
- Screw the threaded barbed fitting into its proper thread on your Smart Waste Cap. Connect your tube to the threaded barbed fitting



- Screw your activated charcoal cartridge into its proper thread on your Smart Waste Caps



- Installation completed!



And do not forget to indicate the date of commissioning and the expiration date of your activated charcoal cartridge to anticipate its renewal!

# SMART WASTE CAPS

## SMART WASTE CAPS FOR DIN 51 / S55

AIT Smart Waste Caps for DIN 51/S55 with their universal capillary connector (external diameter 1/8" to 1/16") and threaded barbed fitting 6 to 9 mm.



SW55-4-C : 4 entries 1/8" and charcoal cartridge emplacement



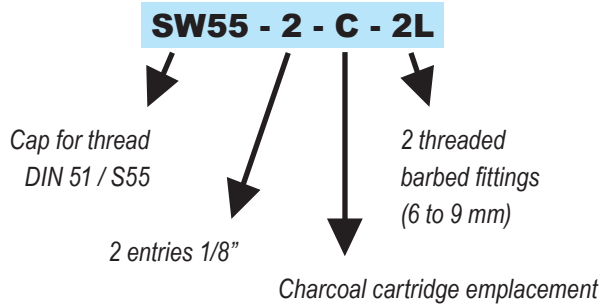
SW55-2-C-2L : 2 entries 1/8", 2 threaded barbed fittings and charcoal cartridge emplacement



SW55-1-C-3L : 1 entry 1/8", 3 threaded barbed fittings and charcoal cartridge emplacement

If you can't find the reference you want, then, create your own Smart Waste Cap even just for one item, without further cost.

### Create your own reference !



SW55-4-C-1L : 4 entries 1/8", a charcoal cartridge emplacement and 1 threaded barbed fitting



SW55-5-C : 5 entries 1/8" and a charcoal cartridge emplacement



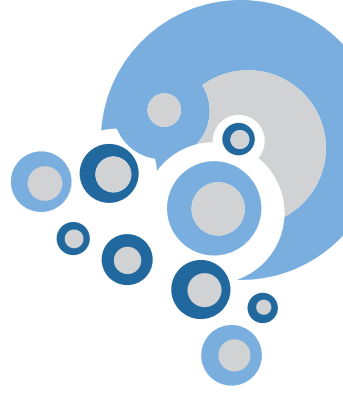
SW55-3-C-2L : 3 entries 1/8", a charcoal cartridge emplacement and 2 threaded barbed fittings



SW55-3-C-3L : 3 entries 1/8", a charcoal cartridge emplacement and 3 threaded barbed fittings

# SMART WASTE CAPS

## SMART WASTE CAPS THREADS



### SMART WASTE CAPS FOR GL45

AIT Smart Waste Caps for GL45 with their universal capillary connector (outer diameter 1/8" to 1/16") and threaded barbed fitting.



SW45-2-C : 2 entries 1/8" and charcoal cartridge emplacement



SW45-5-C : 5 entries 1/8" and charcoal cartridge emplacement



SW45-4-C-1L : 4 entries 1/8", 1 threaded barbed fitting and charcoal cartridge emplacement



SW45-1-C-2L : 1 entry 1/8", 2 threaded barbed fittings and charcoal cartridge emplacement

If you can't find the reference you want, then, create your own Smart Waste cap even just for one item, without further cost.

**Create your own reference !**

**SW45 - 2 - C - 2L**

Cap for thread  
GL45

2 entries 1/8"

2 threaded  
barbed fittings  
(6 to 9 mm)

Charcoal cartridge emplacement



SW45-C-2L : a charcoal cartridge emplacement and 2 threaded barbed fittings  
32 A.I.T. FRANCE



SW45-1-C-1L : 1 entry 1/8", a charcoal cartridge emplacement and 1 threaded barbed fitting



SW45-2-C-2L : 2 entries 1/8", a charcoal cartridge emplacement and 2 threaded barbed fittings



SW45-C-3L : a charcoal cartridge emplacement and 3 threaded barbed fittings  
<http://www.smartcaps.fr>



# SMART WASTE CAPS

## SMART WASTE CAPS THREADS

### SMART WASTE CAPS BURKLE DIN50

Smart Waste Caps for space-saving cans S50 equipped with their universal capillary connector (outer diameter 1/8" to 1/16") and threaded barbed fitting 6 to 9 mm.



SWB-1-C-1L : 1 entry 1/8", 1 threaded barbed fitting and charcoal cartridge emplacement



SWB-3-C : 3 entries 1/8" and charcoal cartridge emplacement



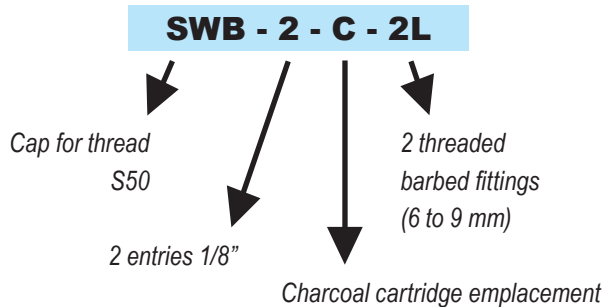
SWB-1-C-3L : 1 entry 1/8", 3 threaded barbed fittings and charcoal cartridge emplacement



SWB-5-C-1L : 5 entries 1/8", 1 threaded barbed fitting and charcoal cartridge emplacement

If you can't find the reference you want, then, create your own Smart Waste cap even just for one item, without further cost.

#### Create your own reference !



SWB-5-C : 5 entries 1/8" and charcoal cartridge emplacement



SWB-2-C-1L : 2 entries 1/8", 1 threaded barbed fitting and charcoal cartridge emplacement

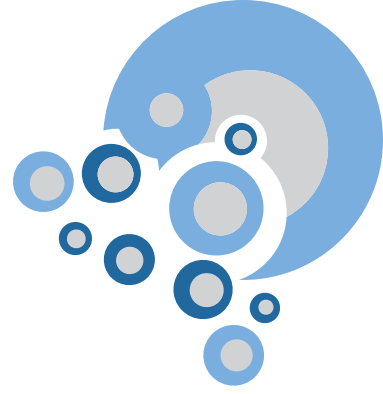


Space saving can (5 Liters)  
Ref : BS-GP

# SMART WASTE CAPS

## SMART WASTE CAPS THREADS

### SMART WASTE CAPS FOR DIN 60 / S61



AIT Smart Waste Caps for DIN 60/S61 with their universal capillary connector (outer diameter 1/8" to 1/16") and threaded barbed fitting 6 to 9 mm.



SW60-2-C : 2 entries 1/8" and charcoal cartridge emplacement



SW60-2-C-1L : 2 entries 1/8", 1 threaded barbed fitting and charcoal cartridge emplacement

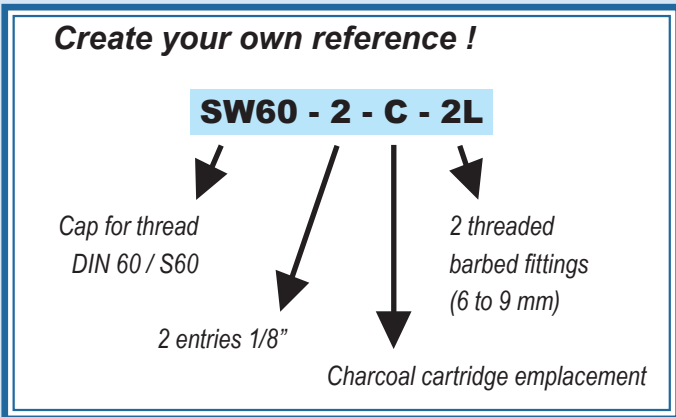


SW60-5-C-1L : 5 entries 1/8", 1 threaded barbed fitting and charcoal cartridge emplacement



SW60-1-C-4L : 1 entry 1/8", 4 threaded barbed fittings and charcoal cartridge emplacement

If you can't find the reference you want, then, create your own Smart Waste cap even just for one item, without further cost.



SW60-1-C-1L : 1 entry 1/8", a charcoal cartridge emplacement and 1 threaded barbed fitting



SW60-6-C : 6 entries 1/8" and a charcoal cartridge emplacement



SW60-2-C-4L : 2 entries 1/8", a charcoal cartridge emplacement and 4 threaded barbed fittings



SW60-C-1L : a charcoal cartridge emplacement and 1 threaded barbed fitting

# SMART WASTE CAPS

## SMART WASTE CAPS THREADS

### SMART WASTE CAPS FOR DIN 90 / S90

AIT Smart Waste Caps for DIN 90/S90 with their universal capillary connector (outer diameter 1/8" to 1/16") and threaded barbed fitting 6 to 9 mm.



SW90-3-C : 3 entries 1/8" and charcoal cartridge emplacement



SW90-3-C-1L : 3 entries 1/8", 1 threaded barbed fitting and charcoal cartridge emplacement



SW90-3-C-2L : 3 entries 1/8", 2 threaded barbed fittings and charcoal cartridge emplacement



SW90-4-C-1L : 4 entries 1/8", 1 threaded barbed fitting and charcoal cartridge emplacement

If you can't find the reference you want, then, create your own Smart Waste cap even just for one item, without further cost.

#### Create your own reference !

**SW90 - 2 - C - 2L**

Cap for thread  
DIN 90 / S90

2 entries 1/8"

2 threaded  
barbed fittings  
(6 to 9 mm)

Charcoal cartridge emplacement



SW90-4-C : 4 entries 1/8" and a charcoal cartridge emplacement



SW90-2-C : 2 entries 1/8" and a charcoal cartridge emplacement



SW90-2-C-1L : 2 entries 1/8", a charcoal cartridge emplacement and 1 threaded barbed fitting

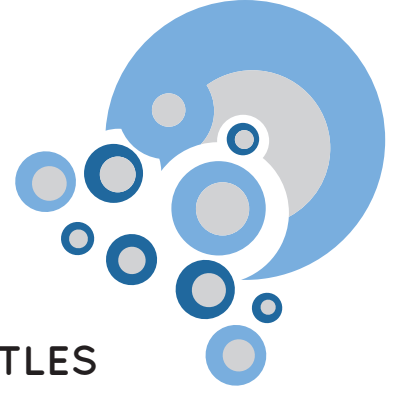


SW90-2-C-2L : 2 entries 1/8", a charcoal cartridge emplacement and 2 threaded barbed fittings



# SMART WASTE CAPS

## SMART WASTE CAPS THREADS



### SMART WASTE CAPS FOR NALGENE'S® BOTTLES

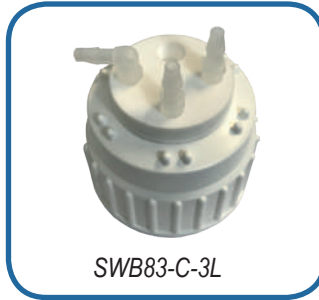
AIT Smart Waste Caps for NALGENE's® bottles with their universal capillary connector (outer diameter 1/8" to 1/16") and threaded barbed fitting 6 to 9 mm.



SWB83-C-1L

**THREAD REFERENCE**

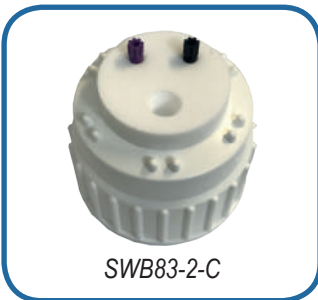
B53	SWB53-C-1L
B83	SWB83-C-1L



SWB83-C-3L

**THREAD REFERENCE**

B53	SWB53-C-3L
B83	SWB83-C-3L



SWB83-2-C

**THREAD REFERENCE**

B53	SWB53-2-C
B83	SWB83-2-C



SWB83-4-C-1L

**THREAD REFERENCE**

B53	SWB53-4-C-1L
B83	SWB83-4-C-1L



If you can't find the reference you want, then, create your own Smart Waste Cap even just for one item, without further cost.

**Create your own reference !**

**SWB53 - 2 - C - 2L**

Cap for Nalgene thread

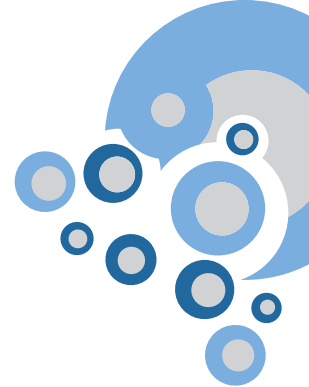
2 entries 1/8"

2 threaded barbed fittings (6 to 9 mm)

Charcoal cartridge emplacement

# SMART WASTE CAPS

## SMART WASTE CAPS THREADS



### LEVEL INDICATOR

Thanks to the level indicator and its integrated floater, you can check immediately the can level.

The level indicator is absolutely necessary for all the opaque cans and the metallic barrel. We can also equipped the level indicator with fittings 1/8" or 1/16" and threaded barbed fitting 6 to 9 mm.

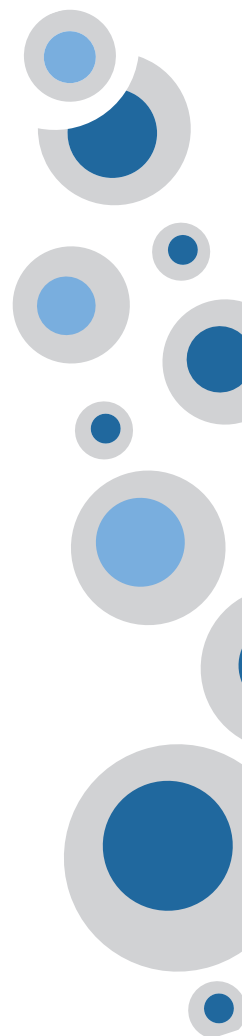
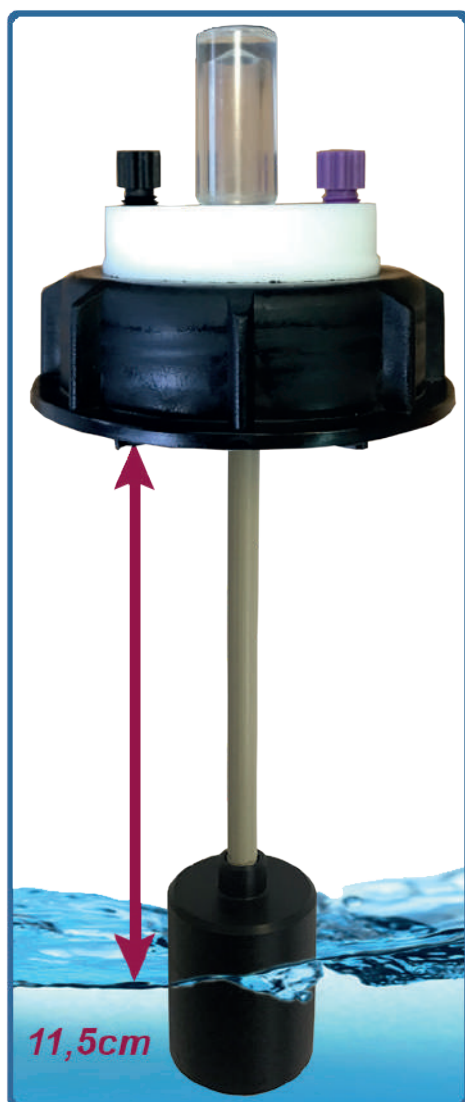
#### *How it works ?*

The level indicator is an option. So you can add it to the Smart Waste Caps reference that you want to equip.

For example, you want to equip the Smart Waste Cap following : SW45-2-C-1L with a level indicator. It becomes :

#### **SW45-2-C-1L-LI**

Please do not hesitate to contact us with any questions you may have.



# SMART WASTE CAPS

## SPECIAL DEMANDS

These 2 elements are easily fixed via their screw system and can go through the bench or be at the edge of the bench.

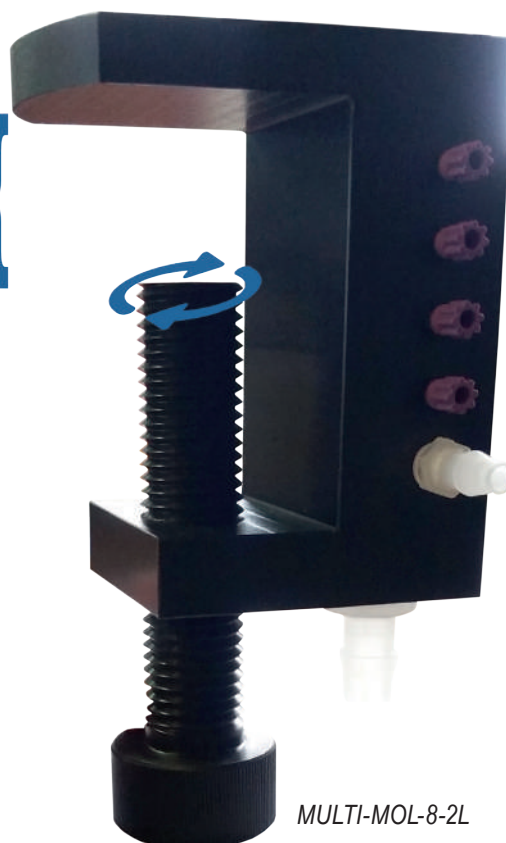
AD45-PAIL-1L



Thickness of your bench (adjustable)

Through-hole adapter for SW45 or SW55 caps with 1 outlet for threaded barbed fitting (6 to 9mm in standard)

Thickness of your bench (adjustable)



MULTI-MOL-8-2L

Multi-inlet system, 8 1/8" entries and 2 entries for tubes, with an outlet to a can under the bench (11 to 13mm in standard). The number of entries and their diameter is adjustable.



**SPECIAL MANUFACTURING AT THE REQUEST OF ANY CAP OR ACCESSORY ACCORDING TO YOUR OWN SPECIFICATIONS: FROM A SINGLE TO NUMEROUS PIECES!**

# SMART WASTE CAPS

## ADAPTERS

ALL TYPES OF ADAPTERS ARE POSSIBLE.

UNLIMITED COMBINATIONS! (AS FAR AS POSSIBLE)



45 mm

**GL45 bottle**  
Measures 45 mm for external thread.



48 mm

**S55 can**  
Measures 48 mm for external thread.

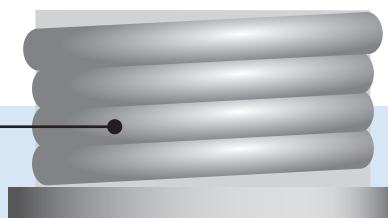


53 mm

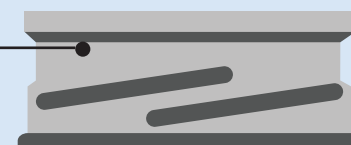
**S60 can**  
Measures 53 mm for external thread.



SW45-C-1L



Adapter



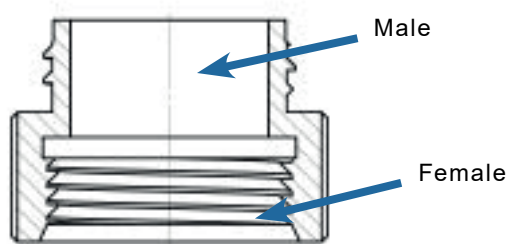
Thread

# SMART WASTE CAPS

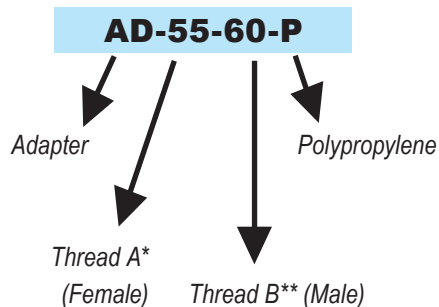
## ADAPTERS

PP OR PTFE ADAPTERS FOR CANS EQUIPPED WITH A SMART WASTE CAPS

\* PP : Polypropylene.



**Create your own adapter!**



\*A = can thread

\*\*B = Smart Waste Caps thread

THREAD A* (FEMALE)	THREAD B** (MALE)	REFERENCE***
GL45	GL32	AD-45-32-P
GL40	GL32	AD-40-32-P
GL45	GL38	AD-45-38-P
GL40	GL38	AD-40-38-P
GL40	GL45	AD-40-45-P
GL45	S55	AD-45-55-P
S55	S60	AD-55-60-P
S55	S90	AD-55-90-P
S60	S90	AD-60-90-P

\*\*\*also available in Teflon: for this, replace "P" with "T" in the reference of the desired product

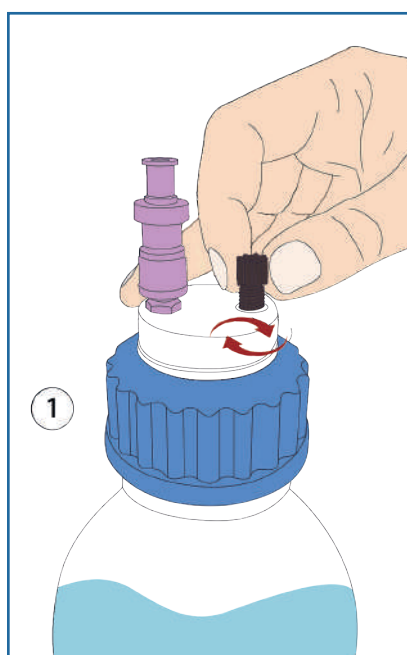


# SMART WASTE CAPS

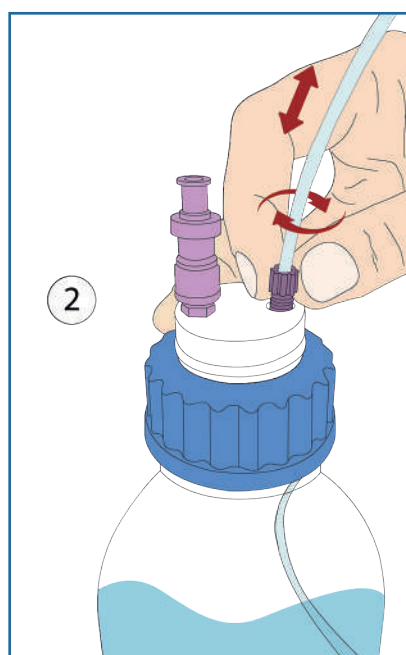
## ACCESSORIES : THE UNIVERSAL CAPILLARY CONNECTOR

- Facilitates the connection of capillary tubes from 1 mm to 3,2 mm (1/8")
- The universal capillary connector replaces the entire nut + ferrule 1/8" et 1/16"
- The universal capillary connector ensures excellent sealing

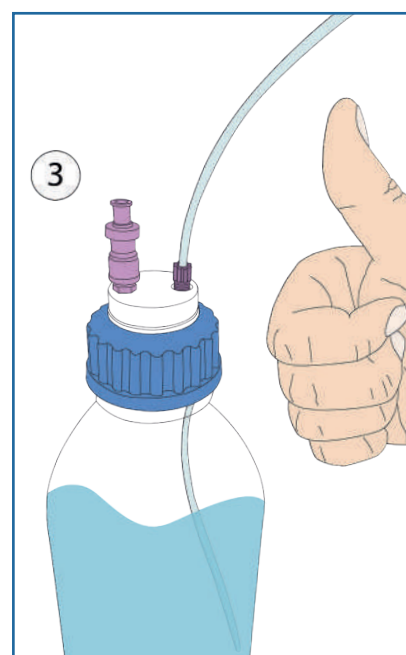
### GUIDE TO CHANGE A UNIVERSAL CAPILLARY CONNECTOR :



- 1
- Insert the universal capillary connector into its proper thread, without fully tightening it.



- 2
- Insert your tube into the universal capillary connector, adjust its length and then screw the fitting until the tube stops moving.



- 3
- Installation completed!

DESCRIPTION	FOR TUBES (OD)	COLOR	QTY/PK	REFERENCE
Universal capillary connector Type I Black	of 1/16" to 1mm	Black	5	CC-ONE-1BL
Universal capillary connector Type I Violet	of 1/16" to 1mm	Purple	5	CC-ONE-1V
Universal capillary connector Type II Black	of 1/8" to 1/16"	Black	5	CC-ONE-2BL
Universal capillary connector Type II Violet	of 1/8" to 1/16"	Purple	5	CC-ONE-2V

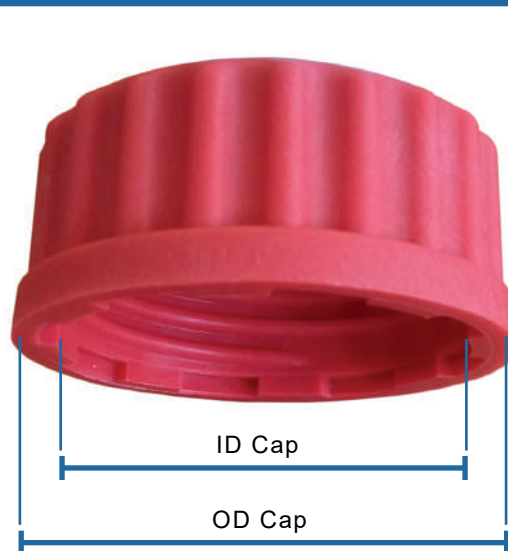


# SMART WASTE CAPS



## HOW TO KNOW THE THREAD OF YOUR CAP?

SmartCaps are available for a wide range of threads. The table below will help you to know which thread you are using. We can adapt our SmartCaps to any kind of threads.



\* G = Glass  
\*\* P = Plastic

Thread	ID Cap	OD Cap	OD Bottle	ID Bottle	Characteristics
GL 28	26.00	27.50	28.00	19.60	Chromsystem, Recipe, 500ml buffer by Sigma
GL 32 (G*)	29.50	31.50	31.50	16.80	For Duran's containers
GL 32 (P**)	29.60	32.60	32.20	18.20	-
GL 38 (G*)	35.50	37.00	37.50	25.70	For Wheaton's and Nalgene's containers
GL 38 (P**)	-	-	-	30.60	4l BDH bottle, Fulltime Reagents
GL 38 (short)	34.00	38.20	37.80	22.20	2.5l canister by Recipe, 1l Biosolve, 10l Fresenius Kabi
38-430	35.30	37.60	37.10	27.40	Wheaton, Nalgene square-cut 500ml plastic bottle
GL40 / S 40(G*)	38.00	40.00	40.00	26.2/27	For Merck's containers
GL40 / S 40(P*)	-	-	40.60	29.30	For Merck's and Metrohm's containers
S 41 / S 42(P*)	39.00	41.00	41.60	32.60	Number DIN42 is often in the cover, Polimoon
S 41 / S 42(G*)	39.00	41.60	42.00	32.10	-
GL 45 (G*)	41.50	45.00	44.50	29.50	Established thread of laboratory bottles
GL 45 (P*)	41.50	42.50	44.50	34.70	-
S 50	45.50	51.50	50.00	40.60	Space-saving canister
S 51	45.50	50.00	48.00	40.70	Nearly identical to S 50, number DIN50 is often in the cover
B 53	50.50	54.50	53.50	39.20	For Nalgene's and Polimoon's containers
S 55	50.50	55.00	53.50	43.30	The number 51/DIN 51/HP 51 is often in the cover
S 60 / S 61	55.50	61.00	59.00	48.20	Number 61 is often in the cover, Mauser 13, RPC containers
B 63	58.50	63.00	62.00	37.10	For Nalgene's containers
S 65	62.00	65.50	64.50	50.20	For Kautex's containers (round canister)
S 70 / S 71	66.00	71.50	70.00	59.40	The number 71 is often in the cover, Rieke 70mm
GLS 80	78.00	83.00	80.00	64.00	Established wide neck opening bottle
B83	83.00	90.00	88.00	65.30	For containers of the brands Kautex and Carboy 80mm
S90	85.00	90.50	88.00	78.50	The number D90 is often in the cover

# SMART WASTE CAPS

## STARTER KIT SMART WASTE CAPS

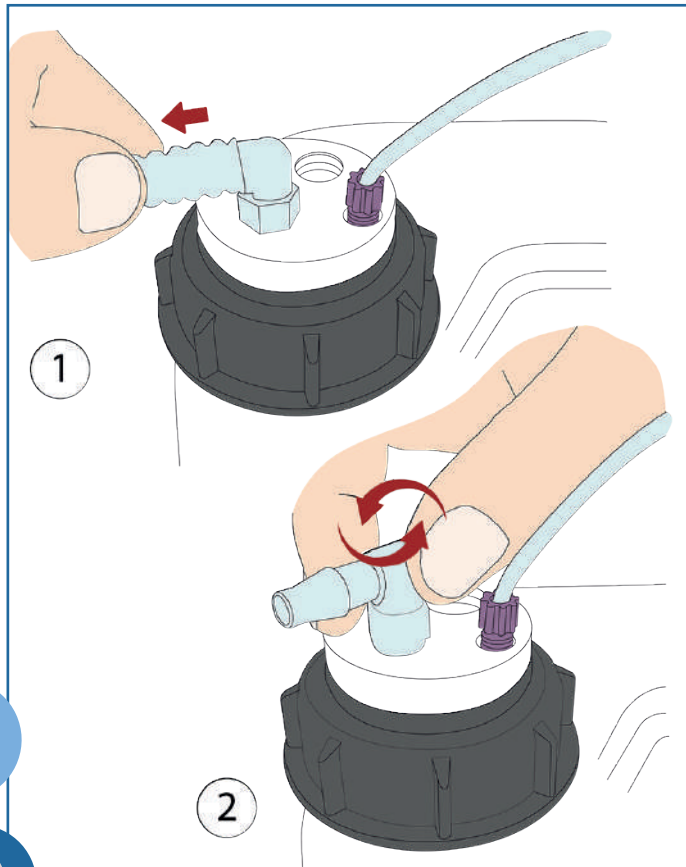
DESCRIPTION	REFERENCE
1x 5L space-saving can, 1x SmartWasteCaps S50 (2x entries 1/8", 1x exhaust filter emplacement & 2x threaded barbed fittings), 1x exhaust filter, 1x plug* for barbed fitting & 1x plug* for 1/8" nut	KIT-SW50
1x 5L can, 1x SmartWasteCaps S45 (2x entries 1/8", 1x exhaust filter emplacement & 2x threaded barbed fittings), 1x exhaust filter, 1x plug* for barbed fitting & 1x plug* for 1/8" nut	KIT-SW45
1x 10L can, 1x SmartWasteCaps S55 (2x entries 1/8", 1x exhaust filter emplacement & 2x threaded barbed fittings), 1x exhaust filter, 1x plug* for barbed fitting & 1x plug* for 1/8" nut	KIT-SW55
1x 20L can, 1x SmartWasteCaps S60 (2x entries 1/8", 1x exhaust filter emplacement & 2x threaded barbed fittings), 1x exhaust filter, 1x plug* for barbed fitting & 1x plug* for 1/8" nut	KIT-SW60



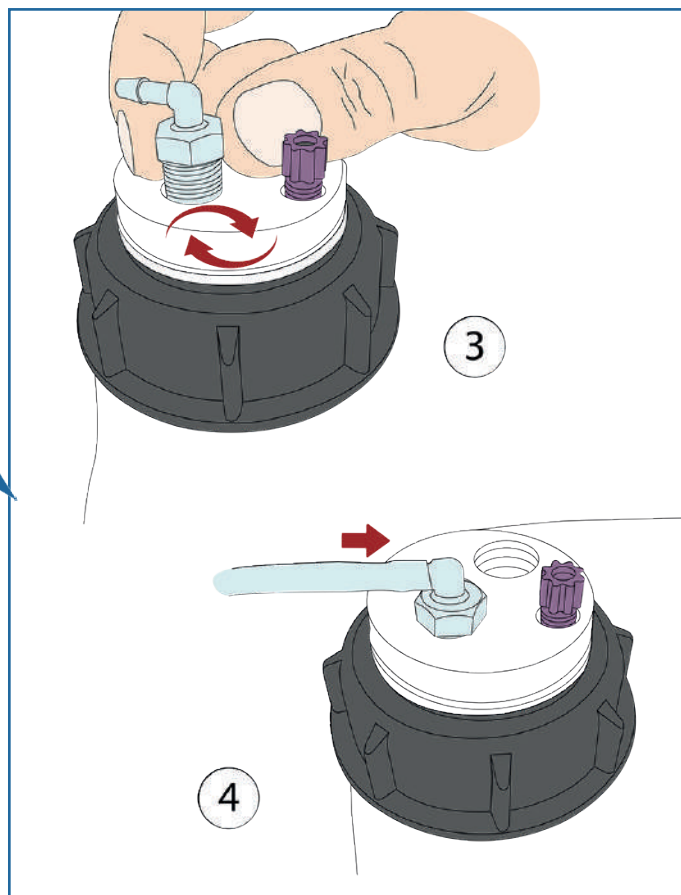
# SMART WASTE CAPS

## ACCESSORIES : *THREADED BARBED FITTINGS*

### GUIDE FOR THREADED BARBED FITTING CHANGE :



Remove the tube from the threaded barbed fitting to change, and then unscrew the threaded barbed fitting.



Screw the new threaded barbed fitting and insert your new tube. Your new connection is ready!

# SMART WASTE CAPS

## ACCESSORIES : THREADED BARBED FITTINGS\*

\*The illustrations of the products are in CAD and are not contractual.  
The threaded barbed fittings are made of translucent PP.



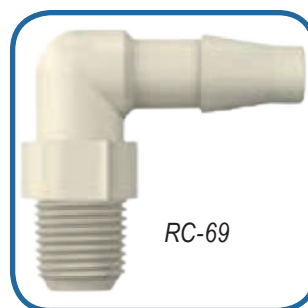
### STRAIGHT THREADED BARBED FITTING / PER UNIT

DESCRIPTION	TUBE DIAMETER (ID)	REFERENCE
Straight threaded barbed fitting	3 to 4 mm	RD-34
Straight threaded barbed fitting	5 to 6 mm	RD-56
Straight threaded barbed fitting	6 to 9 mm	RD-69
Straight threaded barbed fitting	9 to 11 mm	RD-911



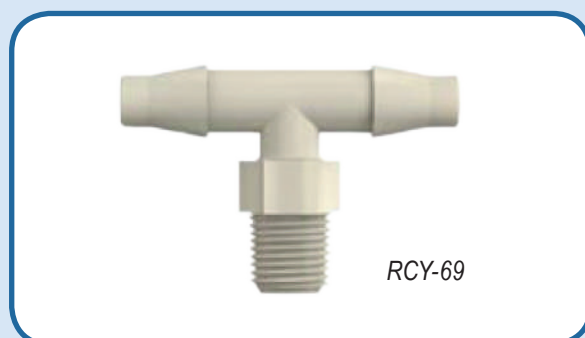
### ANGLED THREADED BARBED FITTING / PER UNIT

DESCRIPTION	TUBE DIAMETER (ID)	REFERENCE
Angled threaded barbed fitting	3 to 4 mm	RC-34
Angled threaded barbed fitting	5 to 6 mm	RC-56
Angled threaded barbed fitting	6 to 9 mm	RC-69
Angled threaded barbed fitting	9 to 11mm	RC-911



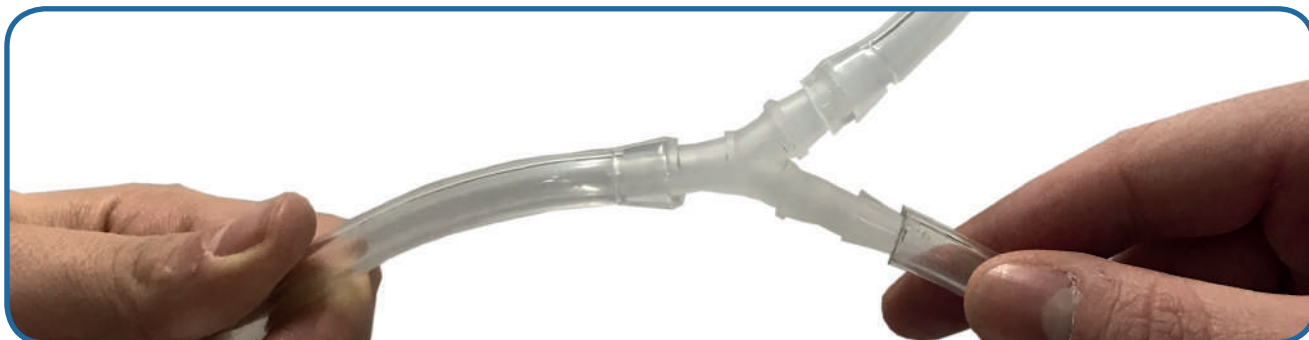
### DOUBLE ANGLED THREADED BARBED FITTING / PER UNIT

DESCRIPTION	ID	REFERENCE
Double angled threaded barbed fitting	5 to 6 mm	RCY-56
Double angled threaded barbed fitting	6 to 9 mm	RCY-69



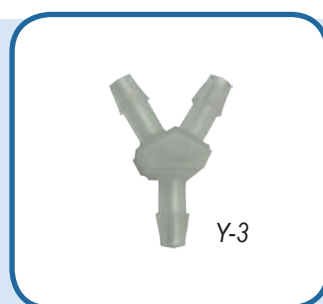
# SMART WASTE CAPS

## ACCESSORIES : CONNECTORS AND ADAPTERS



### Y CONNECTORS\*, PER UNIT

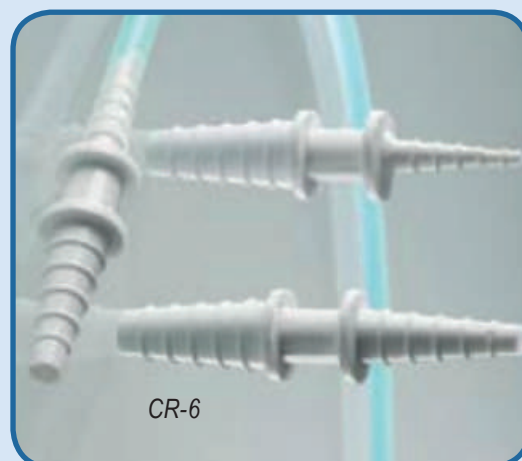
DESCRIPTION	TUBE ID	REFERENCE
Y-Connector 3 mm	3 mm	Y-3
Y-Connector 5 mm	5 mm	Y-5
Y-Connector 7 mm	7 mm	Y-7
Y-Connector 9 mm	9 mm	Y-9
Y-Connector 11 mm	11 mm	Y-11



### CONICAL REDUCERS AND ADAPTERS

#### FOR DIFFERENT SIZES OF TUBES

INLET DIAMETER	OULET DIAMETER	REFERENCE
4,2 - 8 mm	4,2 - 8 mm	CR-1
10,5 - 16 mm	6,5 - 12 mm	CR-3
11 - 15 mm	7 - 12 mm	CR-6



CR-6

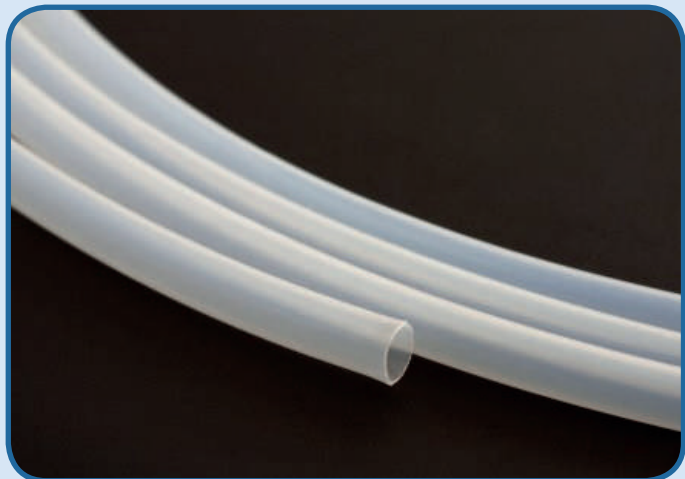
\*The illustrations of the products are in CAD and are not contractual.  
The connectors are made of translucent PP.

# SMART WASTE CAPS

## ACCESSORIES : TUBES AND BLIND PLUGS

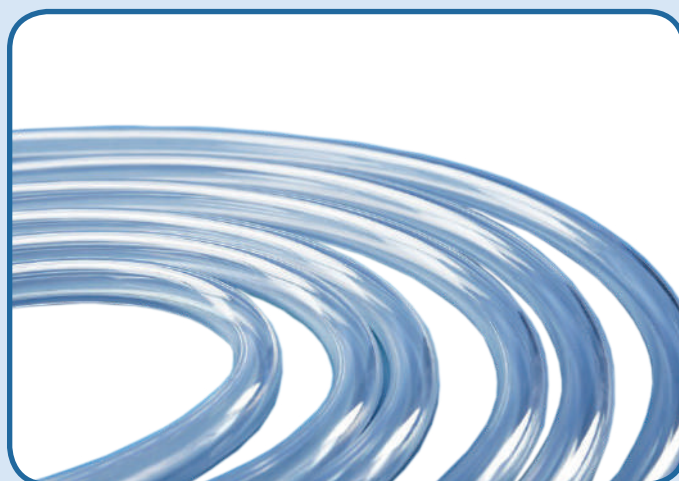


### PTFE TUBES



OD	ID	REFERENCE*	QUANTITY
1/4"	6,3 mm	TP14	1 meter
3/16"	3 mm	TP316	1 meter
1/8"	1,6 mm	TP18	1 meter
1/16"	1,0 mm	TP16	1 meter

### TYGON™ TUBES



OD	ID	REFERENCE*	QUANTITY
9,5 mm	6,4 mm	TYG-64	1 meter
19,1 mm	12,7 mm	TYG-127	1 meter

### BLIND PLUGS

THEY CLOSE THE UNUSED INLETS OF YOUR SMART WASTE CAPS



VP-F18



VP-LEAK



VP-CA

FOR	REFERENCE	QUANTITY
1/8" or 1/16" fitting	VP-F18	Per 10
Threaded barbed fitting	VP-LEAK	Per 5
Charcoal cartridge fitting	VP-CA	Unit

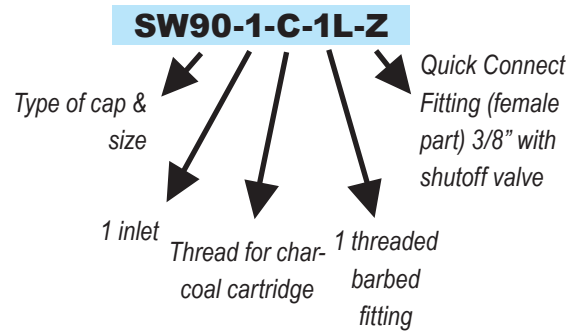
# SMART WASTE CAPS

## ACCESSORIES : QUICK CONNECT FITTINGS

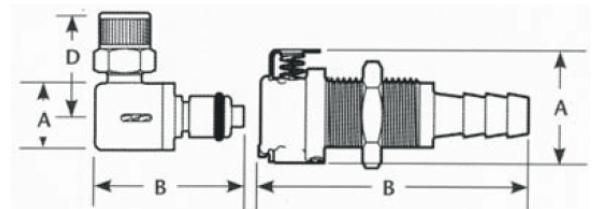


SMART HEALTHY CAPS OR SMART WASTE CAPS WITH QUICK CONNECT FITTINGS (WITH OR WITHOUT SHUTOFF VALVE)

Create your own reference!



A = Height/Diameter (mm)  
 B = Total length (mm)  
 D = Elbow radial length (mm)



## FEMALE PART

DESCRIPTION	OUTLET	PASSAGE	REFERENCE	A	B
Quick Connect (female part) without shutoff valve	1/16" (1,6 mm)	3,2mm	S	22,35	35,56
	1/8" (3,2 mm)	3,2mm	T	22,35	41,91
	1/4" (6,4 mm)	3,2mm	U	22,35	46,99
	3/8" (9,5mm)	6,4mm	V	25,40	49,53
Quick Connect (female part) with shutoff valve	1/16" (1,6 mm)	3,2mm	W	22,35	35,56
	1/8" (3,2 mm)	3,2mm	X	22,35	41,91
	1/4" (6,4 mm)	3,2mm	Y	22,35	46,99
	3/8" (9,5mm)	6,4mm	Z	25,40	49,53

ASK US FOR ADVICE FOR YOUR CUSTOM CONFIGURATIONS!



# SMART WASTE CAPS






## ACCESSORIES : QUICK CONNECT FITTINGS

CHOOSE THE MALE QUICK CONNECT FITTING THAT BEST SUITS YOUR NEEDS AND MODULATE THE CONNECTION ACCORDING TO YOUR WISHES.

### MALE PART

SW55-C-Z &  
QC64-38-CD



TERMINATION	OUTLET	PASSAGE	REFERENCE WITH SHUTOFF	REFERENCE NO SHUTOFF	A	B	D
	1/16" (1,6mm)	3,2mm	QC32-116-CD-C	QC32-116-CD	12,70	20,32/ 37,34	-
	1/8" (3,2mm)	3,2mm	QC32-18-CD-C	QC32-18-CD	12,70	26,67/ 42,42	-
	1/4" (6,4mm)	3,2mm	QC32-14-CD-C	QC32-14-CD	12,70	30,48/ 43,43	-
	1/4" (6,4mm)	3,2mm	QC32-14-CC-C	QC32-14-CC	12,70	27,69/ 30,73	22,86
	1/4-28	3,2mm	QC32-14-TFP-C	QC32-14-TFP	18,29	39,37	-
	1/4" (6,4mm)	6,4mm	QC64-14-CD-C	QC64-14-CD	16,00	34,29/ 50,80	-
	3/8" (9,5mm)	6,4mm	QC64-38-CD-C	QC64-38-CD	16,00	34,29/ 46,23	-
	1/4" (6,4mm)	6,4mm	QC64-14-CC-C	QC64-14-CC	16,00	30,99/ 34,54	24,38
	3/8" (9,5mm)	6,4mm	QC64-38-CC-C	QC64-38-CC	16,00	32,51/ 36,06	24,38

**BEWARE : MALE / FEMALE COMPATIBILITY IS ONLY ENSURED IF THE PASSAGE DIAMETER IS THE SAME FOR BOTH PARTS!**

# SAFETY FUNNELS

A WIDE RANGE TO MEET ALL YOUR NEEDS



# SAFETY FUNNELS

A WIDE RANGE TO MEET ALL YOUR NEEDS



# SAFETY FUNNELS.

## FUNNEL WITH HINGED LID FOR RESIDUAL SOLVENTS

It is installed on a can or a barrel of residual solvent. It is practical and you can equip it with an activated charcoal cartridge if the storage is in a non-ventilated room.

The activated charcoal cartridge prevents the creation of an overpressure in the can if it is exposed to heat.



*\*Activated charcoal cartridge sold separately (see page 24)*

SW55-FSB



DESCRIPTION	REFERENCE WITH CARTRIDGE*	REFERENCE WITHOUT CARTRIDGE
Smart Waste Caps funnel with hinged lid for can S55	SW55-FSC	SW55-FSB
Smart Waste Caps funnel with hinged lid for can S60	SW60-FSC	SW60-FSB
Smart Waste Caps funnel with hinged lid for can S90	SW90-FSC	SW90-FSB
Smart waste caps funnel with hinged lid for space-saving can S50	SWB-FSC	SWB-FSB
Smart Waste Caps funnel with hinged lid for metallic barrel	SWBA-FSC	SWBA-FSB

# SAFETY FUNNELS

## FUNNEL WITH HINGED LID FOR RESIDUAL SOLVENTS

This funnel has a double interest: the direct discharge through the funnel of all your waste, but also the collection of effluent from your HPLC systems with the integration of inlet fittings and / or threaded barbed fittings on the funnel.

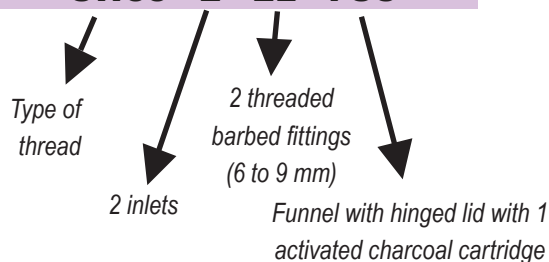
DESCRIPTION	THREAD	REFERENCE
Funnel with hinged lid with 1 activated charcoal cartridge, 2 inlets 1/8" (3.2mm) and 1 threaded barbed fitting (6 to 9mm)	S55	SW55-2-1L-FSC
	S60	SW60-2-1L-FSC
	S90	SW90-2-1L-FSC
	Metallic barrel	SWBA-2-1L-FSC
	Space-saving can	SWB-2-1L-FSC
Funnel with hinged lid with 1 activated charcoal cartridge, 2 inlets 1/8" (3.2mm) and 2 threaded barbed fittings (6 to 9mm)	S55	SW55-2-2L-FSC
	S60	SW60-2-2L-FSC
	S90	SW90-2-2L-FSC
	Metallic barrel	SWBA-2-2L-FSC
	Space-saving can	SWB-2-2L-FSC
Funnel with hinged lid with 1 activated charcoal cartridge, 2 inlets 1/8" (3.2mm) and 3 threaded barbed fittings (6 to 9mm)	S55	SW55-2-3L-FSC
	S60	SW60-2-3L-FSC
	S90	SW90-2-3L-FSC
	Metallic barrel	SWBA-2-3L-FSC
	Space-saving can	SWB-2-3L-FSC



\*Activated charcoal cartridge sold separately (see page 24)

### Create your own reference !

**SW55 - 2 - 2L - FSC**



**For any special configuration (exemple: 2 entries of different diameters), contact us directly!**

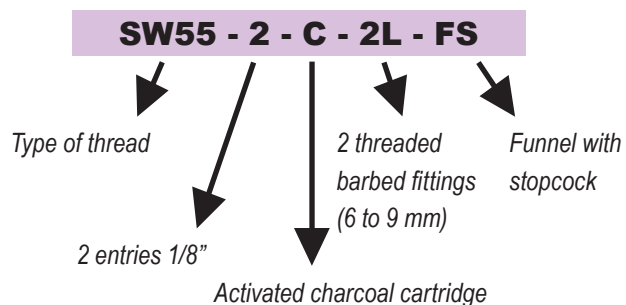
# SAFETY FUNNELS

## FUNNEL WITH STOPCOCK

It secures the storage of your residual solvents, equipped with an activated charcoal cartridge for filtration of unobstructed vapors. It is possible to add entries and / or threaded barbed fittings by creating your own reference (see below).

FOR CANS	REFERENCE
S51/55	SW55-C-FS
S60/61	SW60-C-FS

### Create your own reference !



Note : Standard references are not equipped with additional inlets. For another configuration, follow the explanation above and create your own reference!

# SAFETY FUNNEL

## FUNNEL WITH BALL VALVE WITH HIGH SPILL CAPACITY

Funnel with ball valve allowing to quickly pour used solvents, for plastic can from 5 to 50L.



Funnel with ball valve with activated charcoal cartridge



Funnel with ball valve without activated charcoal cartridge

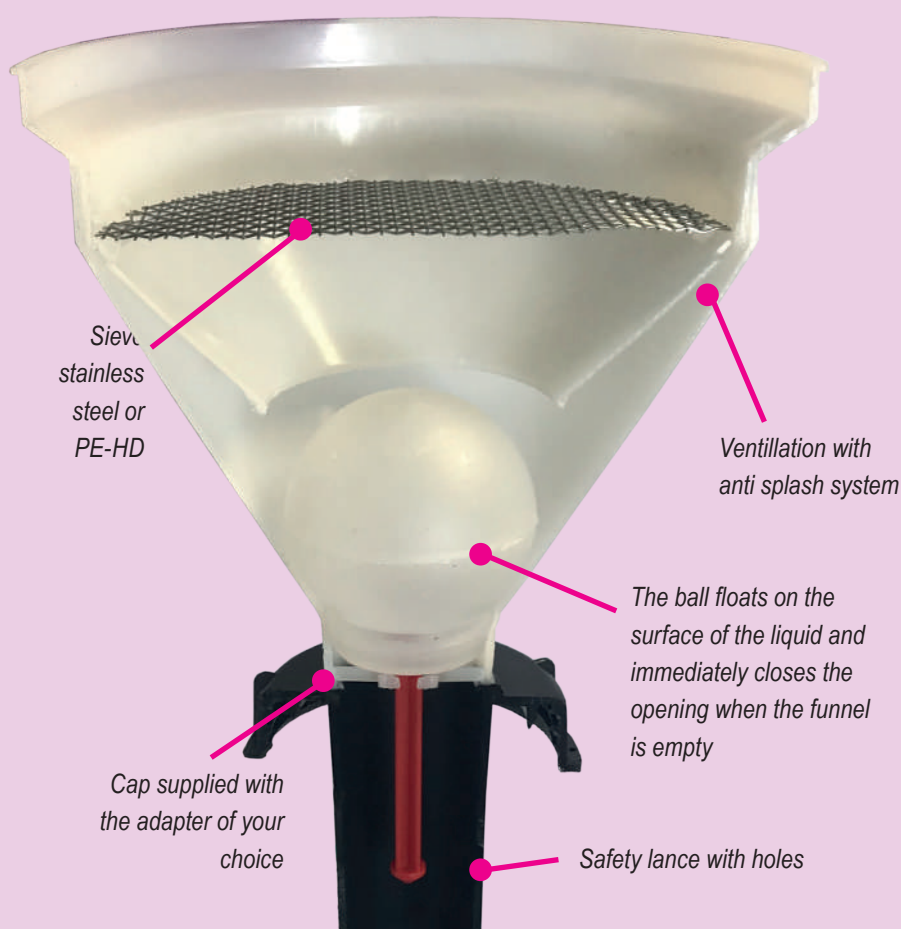
DESCRIPTION	REFERENCE WITHOUT CARTRIDGE	REFERENCE WITH CARTRIDGE *
Funnel with ball valve for can S55	ET55-B	ET55-C-B
Funnel with ball valve for can S60	ET60-B	ET60-C-B
Funnel with ball valve for can S90	ET90-B	ET90-C-B
Funnel with ball valve for space-saving can S50	ETB-B	ETB-C-B
Funnel with ball valve for metallic barrel	ETBA-B	ETBA-C-B

\* Activated charcoal cartridge are to be ordered separately

# SAFETY FUNNEL

## FUNNEL WITH BALL VALVE WITH SMART WASTE CAP FONCTION

Funnel with ball valve for 5 to 20L can and metallic barrel, with or without external solvent inlet. It can be equipped with the same functions as a conventional Smart Waste Cap (threaded barbed fittings, activated charcoal cartridge, inlets) to directly receive the effluent from your HPLC chains without passing through the funnel.



Funnels with ball valve with activated charcoal cartridge



ET55-3-C-1L

**For any other configuration, contact us directly!**

DESCRIPTION	THREAD	REFERENCE
Funnel with ball valve with an adapter for the activated charcoal cartridge, 2 fittings 1/8" and 1 threaded barbed fitting (6 to 9 mm)	S55	ET55-2-C-1L
	S60	ET60-2-C-1L
	S90	ET90-2-C-1L
	NALGENE® B83	ETB83-2-C-1L



# SAFETY FUNNEL

*FUNNEL WITH BALL VALVE WITH HIGH SPILL CAPACITY FOR BARREL*

DESCRIPTION	REFERENCE
Funnel with ball valve for metallic or plastic barrel	ETBA-B
Funnel with ball valve for metallic or plastic barrel + 1 threaded barbed fitting (6 to 9 mm)	ETBA-1L
Funnel with ball valve for metallic or plastic barrel + 2 threaded barbed fittings (6 to 9 mm)	ETBA-2L



ETBA-B

DESCRIPTION	REFERENCE
Sieve in polyethylene (HD-PE)	TAM-PE *
Sieve in stainless steel	TAM-LUX *



\* Add the option reference at the end of the funnel reference.

# SAFETY FUNNEL

## ELECTRICALLY CONDUCTIVE FUNNEL WITH BALL VALVE



DESCRIPTION	THREAD	REFERENCE
Electrically conductive funnel with ball valve equipped with a stainless steel sieve	S55	ET55-B-EL
	S60	ET60-B-EL
	S90	ET90-B-EL
	NALGENE® B83	ETB83-B-EL
Electrically conductive funnel with ball valve equipped with a stainless steel sieve and an adapter for an activated charcoal cartridge	S55	ET55-C-EL
	S60	ET60-C-EL
	S90	ET90-C-EL
	NALGENE® B83	ETB83-C-EL

## ELECTRO CONDUCTIVE CANS



VOLUME (LITER)	THREAD	REFERENCE
10	S60 / DIN 61	B10-61-EL
20	S60 / DIN 61	B20-61-EL
30	S60 / DIN 61	B30-61-EL

# SAFETY FUNNEL

## NOTES

.....

.....

.....

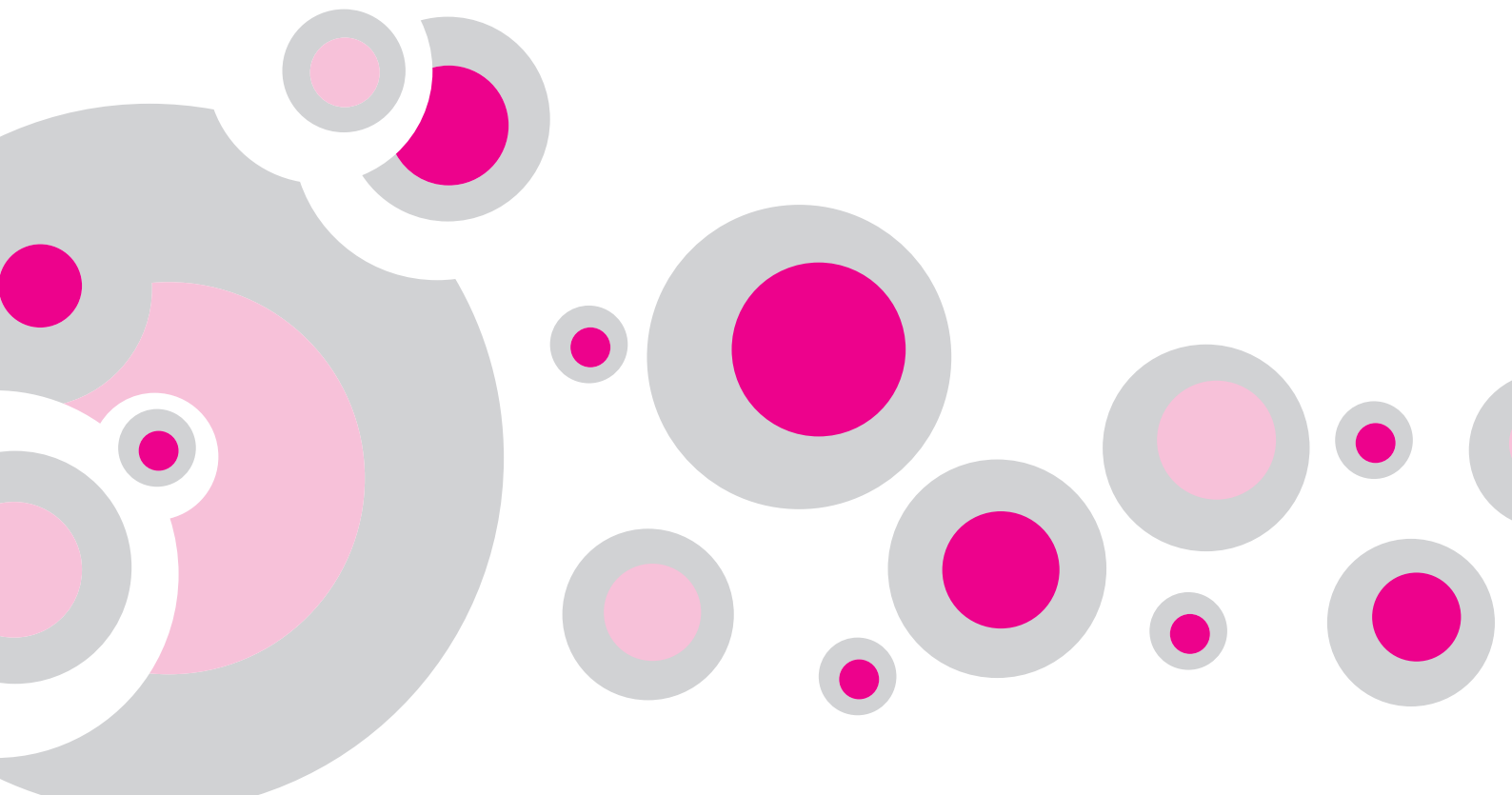
.....

.....

.....

.....

.....



# RETENTION TRAYS & CANS

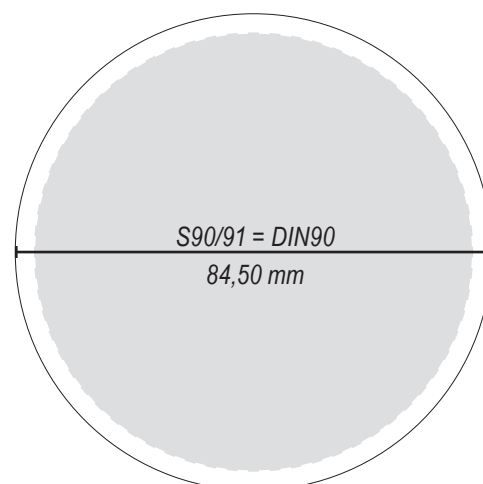
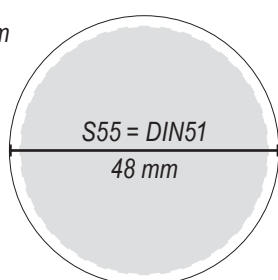
## CANS IN *HD-PE* CHEMICALLY INERT

VOLUME (LITER)	THREAD	REFERENCE
2,5 L	GL45	B2-45
5 L	GL45	B5-45
5 L	S55	B5-55
10 L	S55	B10-55
20 L	S60 / DIN 60	B20-60
5 L (space-saving can)	S50 / DIN 50	BS-GP

### How to determine the thread of your can?

\* S = ISO's norm

\* DIN = DIN's norm



### LOOSENING WRENCH



# RETENTION TRAYS & CANS

## RETENTION TRAYS

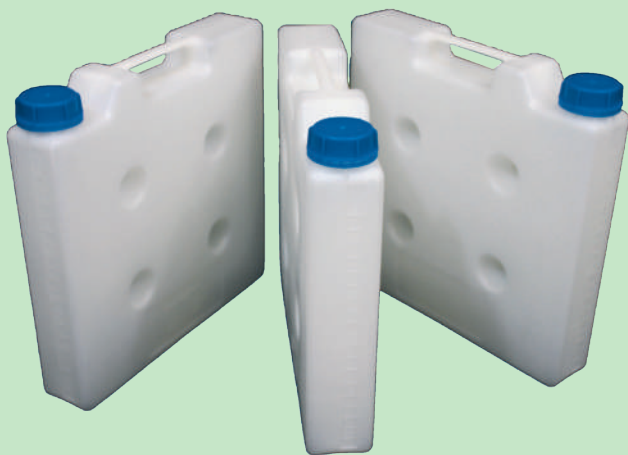
Avoid accidental overflow. A.I.T offers 3 sizes of retention trays. With a grid to keep the can dry.



DESCRIPTION	DIMENSION (MM)		CAPACITY	REFERENCE
	EXTERNAL	INTERNAL		
Little Retention Tray	H.70 × D.347 × W.230	D.280 × W.165	3L	BAC-R-3
Medium Retention Tray	H.75 × D.437 × W.285	D.380 × W.220	5L	BAC-R-5
Large Retention Tray	H.75 × D.485 × W.335	D.420 × W.265	8L	BAC-R-8

*H* : height  
*W* : width  
*D* : depth

## SPACE-SAVING CAN IN HD-PE



BS-GP

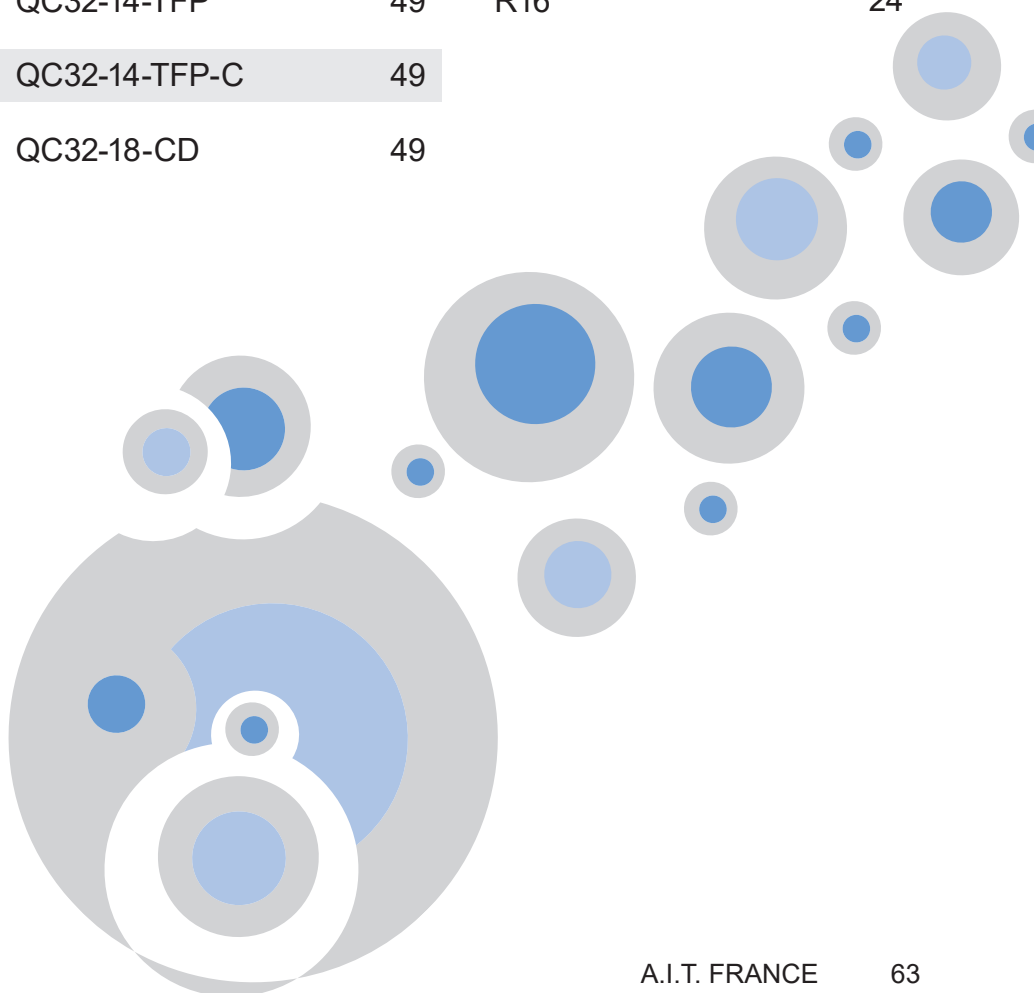
VOLUME (LITER)	THREAD
5	GL45
DIMENSION (MM) EXT.	REFERENCE
H. 335 x D. 335 x W. 65	BS-GP

# INDEX

REFERENCE	PAGE	REFERENCE	PAGE	REFERENCE	PAGE
AD-2T-GL45	18	B20-61-EL	58	ET60-B	55
AD-32-45-P	20	B2-45	60	ET60-B-EL	58
AD-32-45-T	20	B30-61-EL	58	ET60-C-B	55
AD-38-45-T	20	B5-45	60	ET60-C-EL	58
AD-38-45-P	20	B5-55	60	ET90-2-C-1L	56
AD-40-32-P	40	BAC-R-3	61	ET90-B	55
AD-40-38-P	40	BAC-R-5	61	ET90-B-EL	58
AD-40-45-P	20	BAC-R-8	61	ET90-C-B	55
AD-40-45-P	40	BS-GP	61	ET90-C-EL	58
AD-40-45-T	20	CC-ONE-1BL	23, 41	ETB83-2-C-1L	56
AD-45-32-P	40	CC-ONE-1V	23, 41	ETB83-B	55
AD-45-38-P	40	CC-ONE-2BL	23, 41	ETB83-B-EL	58
AD-45-55-P	40	CC-ONE-2V	23, 41	ETB83-C	55
AD-45-EM	12	CR-1	46	ETB83-C-EL	58
AD45-PAIL-1L	38	CR-3	46	ETBA-1L	57
AD-4T-GL45	18	CR-6	46	ETBA-2L	57
AD-55-60-P	40	DIS 10	13	ETBA-B	55, 57
AD-55-90-P	40	DIS 25	13	ETBA-C-B	55
AD-60-90-P	40	ET55-2-C-1L	56	ETB-B	55
AD-CPC-JUST	29	ET55-B	55	ETB-C-B	55
AD-D-JUST	29	ET55-B-EL	58	F16-1	24
B10-55	60	ET55-C-B	55	F14	24
B10-61-EL	58	ET55-C-EL	58	F16	24
B20-60	60	ET60-2-C-1L	56	F18	24

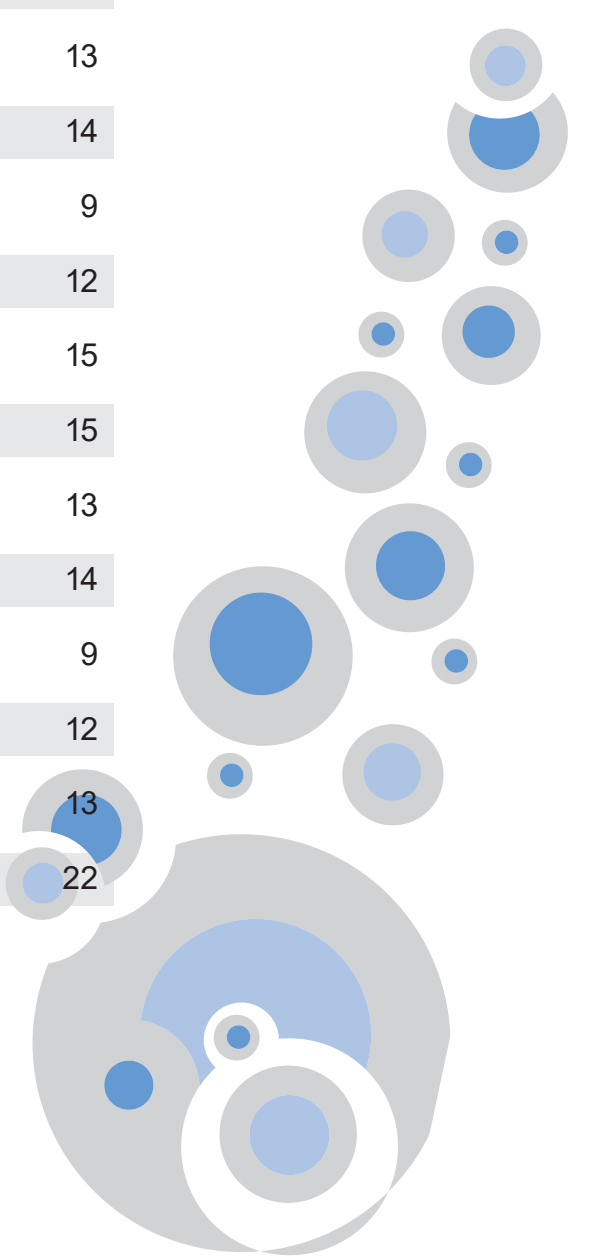
# INDEX

REFERENCE	PAGE	REFERENCE	PAGE	REFERENCE	PAGE
F18-25	24	GL5000-C	21	QC32-18-CD-C	49
F316	24	GL500-A	21	QC64-14-CC	49
FC-100	26	GL500-C	21	QC64-14-CC-C	49
FC-100-C	26	KEY-55-60	60	QC64-14-CD	49
FC-100-KOH	26	MULTI-MOL-6-4L	38	QC64-14-CD-C	49
FC-180	28	QC32-116-CD	49	QC64-38-CC	49
FC-25	26	QC32-116-CD-C	49	QC64-38-CC-C	49
FC-250	27	QC32-14-CC	49	QC64-38-CD	49
FC-25-C	26	QC32-14-CC-C	49	QC64-38-CD	49
FC-50	26	QC32-14-CD	49	QC64-38-CD-C	49
FC-500	27	QC32-14-CD-C	49	R14	24
FC-50-C	26	QC32-14-TFP	49	R16	24
FC-90	28	QC32-14-TFP-C	49		
FC-AD-CPC	29	QC32-18-CD	49		
FC-AD-JUST	29				
FC-D	28				
FC-D-90	28				
GL1000-A	21				
GL1000-C	21				
GL2000-A	21				
GL2000-C	21				
GL250-A	21				
GL250-C	21				
GL5000-A	21				



# INDEX

<i>REFERENCE</i>	<i>PAGE</i>	<i>REFERENCE</i>	<i>PAGE</i>
R18	24	SHCB53-FSP-B	17
R316	24	SHCBA-FSP-A	17
RC-34	45	SHCBA-FSP-C	17
RC-56	45	SHCBA-FSP-B	17
RC-69	45	SHC-1-EM	12
RC-911	45	SHC-P-A	15
RCY-56	45	SHC-P-B	15
RCY-69	45	SHC-1PV	13
RD-34	45	SHC-1-SEPT	14
RD-56	45	SHC-2	9
RD-69	45	SHC-2-EM	12
RD-911	45	SHC-P-A-C	15
SHC-1	9	SHC-P-2B	15
SHC45-FSP-A	17	SHC-2PV	13
SHC45-FSP-C	17	SHC-2-SEPT	14
SHC45-FSP-B	17	SHC-3	9
SHC55-FSP-A	17	SHC-3-EM	12
SHC55-FSP-C	17	SHC-3PV	13
SHC55-FSP-B	17	SHC-SV-PREP	22
SHC60-FSP-A	17		
SHC60-FSP-C	17		
SHC60-FSP-B	17		
SHCB53-FSP-A	17		
SHCB53-FSP-C	17		



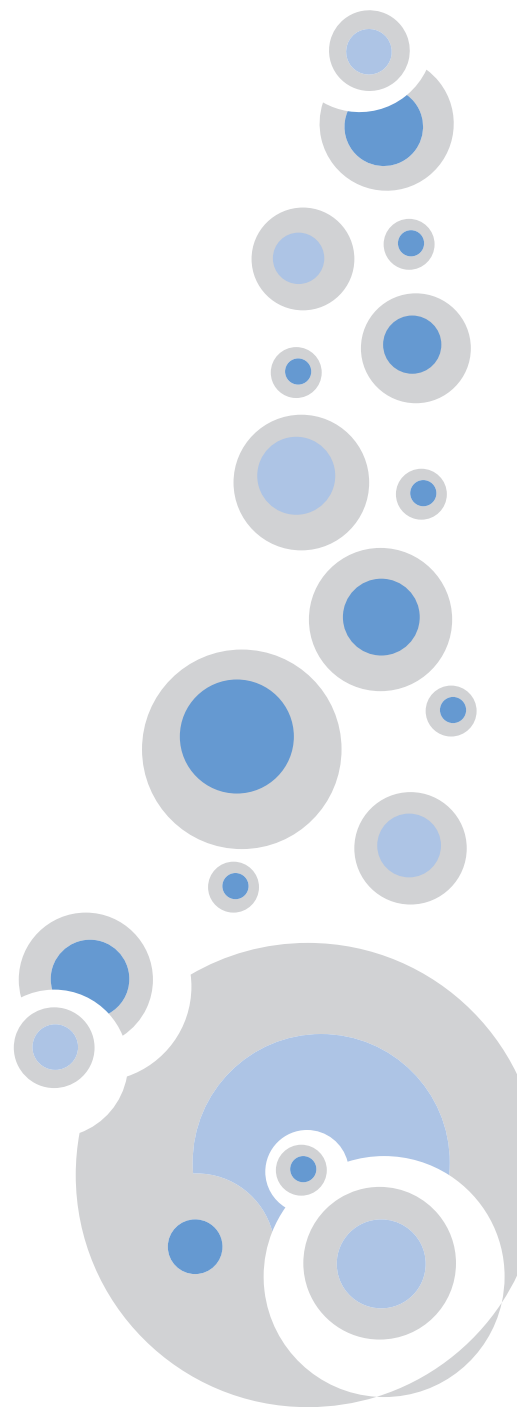


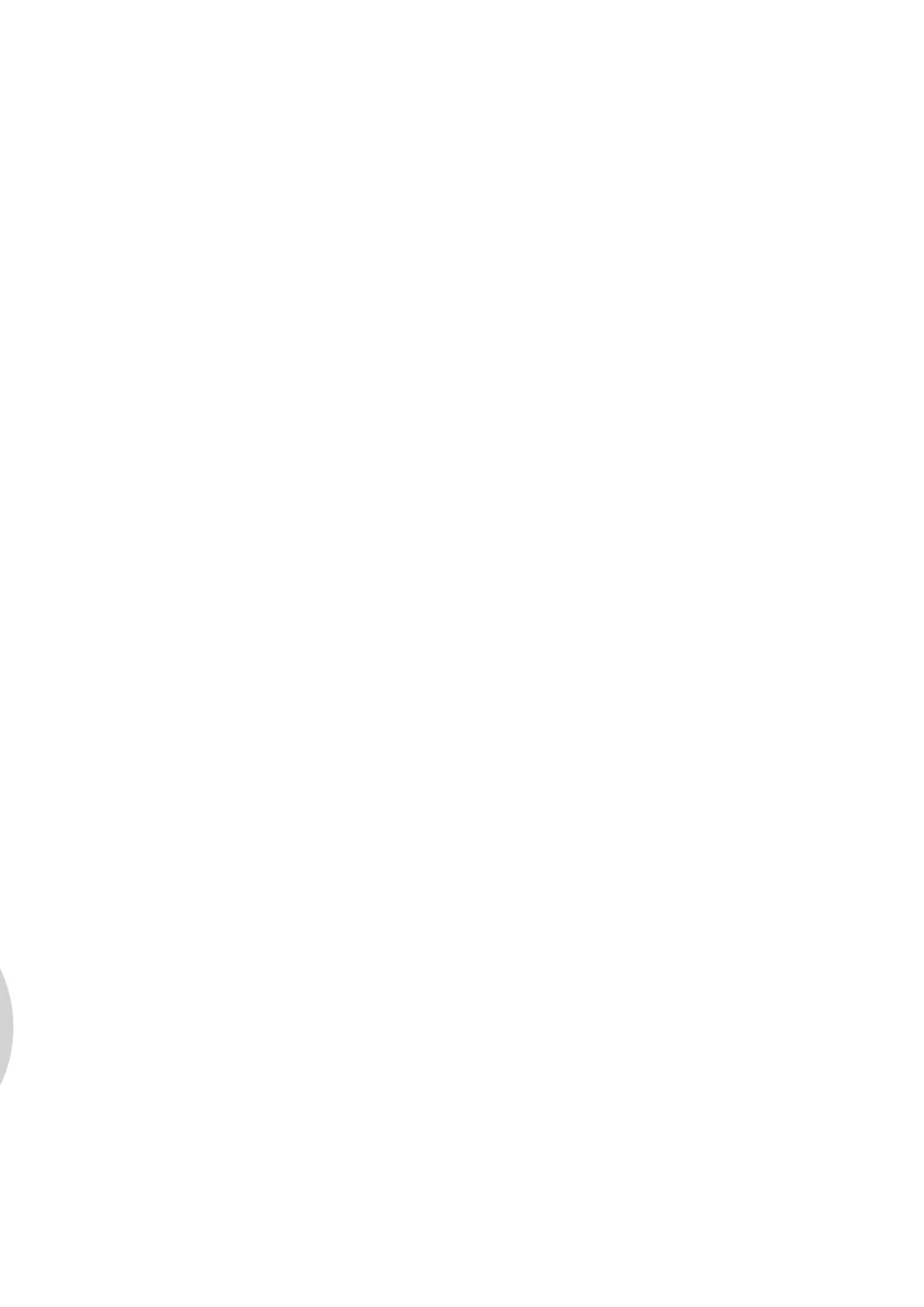
# INDEX

REFERENCE	PAGE	REFERENCE	PAGE	REFERENCE	PAGE
SHC-3-SEPT	14	SHC-V4	12	SW55-FSC	52
SHC-4	9	SW45-1-C-1L	32	SW60-1-C-1L	34
SHC-4-EM	12	SW45-1-C-2L	32	SW60-1-C-4L	34
SHC-4PV	13	SW45-2-C-1L-LI	37	SW60-2-1L-FSC	53
SHC-5	9	SW45-2-C	32	SW60-2-2L-FSC	53
SHC55-P-A	16	SW45-2-C-2L	32	SW60-2-3L-FSC	53
SHC55-P-A-B	16	SW45-4-C-1L	32	SW60-2-C	34
SHC55-P-A-C	16	SW45-5-C	32	SW60-2-C-1L	34
SHC55-P-B	16	SW45-C-2L	32	SW60-2-C-4L	34
SHC55-P-2A-B	16	SW45-C-3L	32	SW60-5-C-1L	34
SHC55-P-3A	16	SW55-1-C-3L	31	SW60-6-C	34
SHC60-P-A	16	SW55-2-1L-FSC	53	SW60-C-1L	34
SHC60-P-A-C	16	SW55-2-2L-FSC	53	SW60-C-FS	54
SHC60-P-B	16	SW55-2-3L-FSC	53	SW60-FSB	52
SHC60-P-2A-C	16	SW55-2-C-1L	31	SW60-FSC	52
SHC-SV	22	SW55-2-C-2L	31	SW90-1-C-1L-Z	48
SHC-SV10	22	SW55-3-C-2L	31	SW90-2-1L-FSC	53
SHC-SV50	22	SW55-3-C-3L	31	SW90-2-2L-FSC	53
SHC-SV-AB	22	SW55-4-C	31	SW90-2-3L-FSC	53
SHC-SV-AB10	22	SW55-4-C-1L	31	SW90-2-C	35
SHC-SV-AB50	22	SW55-5-C	31	SW90-2-C-1L	35
SHC-V1	12	SW55-C-Z	48	SW90-2-C-2L	35
SHC-V2	12	SW55-C-FS	54	SW90-3-C	35
SHC-V3	12	SW55-FSB	52	SW90-3-C-1L	35

# INDEX

REFERENCE	PAGE	REFERENCE	PAGE
SW90-3-C-2L	35	SWBA-2-3L-FSC	53
SW90-4-C	35	SWBA-FSB	52
SW90-4-C-1L	35	SWBA-FSC	52
SW90-FSB	52	SWB-FSB	52
SW90-FSC	52	SWB-FSC	52
SWB-1-C-1L	33	TAM-LUX	57
SWB-1-C-3L	33	TAM-PE	57
SWB-2-1L-FSC	53	TER	58
SWB-2-2L-FSC	53	TP16	25, 47
SWB-2-3L-FSC	53	TP14	25, 47
SWB-2-C-1L	33	TP18	25, 47
SWB-3-C	33	TP316	25, 47
SWB-5-C	33	TYG-127	25, 47
SWB-5-C-1L	33	TYG-64	25, 47
SWB53-2-C	36	VP-CA	47
SWB53-4-C-1L	36	VP-F18	24, 47
SWB53-C-1L	36	VP-LEAK	47
SWB53-C-3L	36	Y-11	46
SWB83-2-C	36	Y-3	46
SWB83-4-C-1L	36	Y-5	46
SWB83-C-1L	36	Y-7	46
SWB83-C-3L	36	Y-9	46
SWBA-2-1L-FSC	53		
SWBA-2-2L-FSC	53		







TO PROTECT YOUR HEALTH

*YOUR LOCAL DISTRIBUTOR*

A.I.T. FRANCE  
117 rue de Stalingrad  
78800 Houilles

Phone : +33 (0) 1 34 93 10 80  
Fax : +33 (0) 1 34 93 45 67  
E-mail : [aitfrance@aitfrance.fr](mailto:aitfrance@aitfrance.fr)